

CHINO VALLEY FIRE DISTRICT
BOND DEBT SERVICE FUND BANK RECONCILIATION OCTOBER 2025

Reconciliation:

| | | |
|--|-----------|-------------------|
| Beginning Balance: | \$ | 87,607.06 |
| Tax Revenue: | \$ | 193,491.63 |
| Interest Revenue: | \$ | 288.42 |
| Principle/Interest Payments: | \$ | - |
| Interest Paid on Tax Roll Corrections: | \$ | - |
| Other: | \$ | - |
| Ending Balance: | \$ | 281,387.11 |

Bank Statement Balance:

| | | |
|-----------------------|----|------------|
| Balance Per Bank: | \$ | 281,387.11 |
| Outstanding Checks: | \$ | - |
| Outstanding Deposits: | \$ | - |

Ending Balance: \$ 281,387.11

Difference Between Balances: \$ -

Deposits Per Bank Statement:

| | | |
|--------------------------|-----------|-------------------|
| Real Estate Taxes: | \$ | 190,337.43 |
| Personal Property Taxes: | \$ | 3,154.20 |
| Interest Revenue: | \$ | 288.42 |
| Other: | \$ | - |
| Ending Balance: | \$ | 193,780.05 |

Reconciliation Approved By:

John Feddema
 John Feddema, Fire Chief

Reconciliation Reviewed By:

Cody Rose
 Cody Rose, Assistant Chief of Administration

Reconciliation Prepared By:

Karen Mauldin
 Karen Mauldin, Finance Manager

CHINO VALLEY FIRE DISTRICT
BOND DEBT FUND - OCTOBER 2025

| | | |
|-------------------------|----|------------|
| Real Estate Taxes: | \$ | 190,337.43 |
| UPP Taxes: | \$ | 3,154.20 |
| Interest Received: | \$ | 288.42 |
| Other: Bos Sale - Taxes | \$ | - |

| | | |
|---------------|-----------|-------------------|
| TOTAL: | \$ | 193,780.05 |
|---------------|-----------|-------------------|



Yavapai County Treasurer

Monthly Statement

Date Range: 10/1/2025 to 10/31/2025

| | | |
|--|--|--|
| Chino Valley Fire Dist BDS Fund: 6065640700 | | |
|--|--|--|

| | | | | |
|-------------------|-----------------------------------|------------|-----------------------|------------|
| 6065640700 | Chino Valley Fire Dist BDS | | | |
| Begin Balance: | 87,607.06 | 73,334.11 | | |
| Income: | 193,780.05 ✓ | 208,053.00 | | |
| LOC Advance: | .00 | .00 | | |
| Expense: | .00 | .00 | LOC: | .00 |
| LOC Payments: | .00 | .00 | Warrants Outstanding: | .00 |
| Cash Balance: | 281,387.11 | 281,387.11 | End: | 281,387.11 |

Monthly Statement Summary

| Source Code | Description | MTDAmount | YTDAmount |
|--|-------------------------------------|-------------------|-------------------|
| 6065640700 Chino Valley Fire Dist BDS | Beginning Balance: | 87,607.06 | 73,334.11 |
| 11100.2024 | 2024 Real Estate Taxes | 781.38 | 5,197.98 |
| 11100.2025 | 2025 Real Estate Taxes | 189,556.05 | 196,420.16 |
| 12100.2014 | 2014 Personal Property Taxes | .65 | 2.63 |
| 12100.2017 | 2017 Personal Property Taxes | .00 | .79 |
| 12100.2020 | 2020 Personal Property Taxes | 31.05 | 40.22 |
| 12100.2021 | 2021 Personal Property Taxes | 9.06 | 22.43 |
| 12100.2022 | 2022 Personal Property Taxes | 4.32 | 34.78 |
| 12100.2023 | 2023 Personal Property Taxes | 12.69 | 113.50 |
| 12100.2024 | 2024 Personal Property Taxes | 57.98 | 528.08 |
| 12100.2025 | 2025 Personal Property Taxes | 3,038.45 | 3,284.11 |
| 38109.0 | Interest on Investments St Treas | 189.79 | 1,530.00 |
| 38111.0 | Interest on Investments | 6.57 | 66.72 |
| 38113.0 | Interest on Investments-Wells Fargo | 92.06 | 811.60 |
| | Ending Balance: | 281,387.11 | 281,387.11 |

Monthly Statement Detail

| Date | Notes | Doc # | Amount | C/D |
|--|------------------|-------|-------------------------------------|-----|
| 6065640700 Chino Valley Fire Dist BDS | | | Beginning Balance: 87,607.06 | |
| 11100.2024 2024 Real Estate Taxes | | | Source Code Total: 781.38 | |
| 10/01 | Tax Distribution | 0 | .97 | C |
| 10/03 | Tax Distribution | 0 | 87.95 | C |
| 10/06 | Tax Distribution | 0 | 13.98 | C |
| 10/08 | Tax Distribution | 0 | 4.63 | C |
| 10/08 | Tax Distribution | 0 | .13 | C |
| 10/10 | Tax Distribution | 0 | 19.58 | C |
| 10/14 | Tax Distribution | 0 | 8.38 | C |
| 10/15 | Tax Distribution | 0 | 34.03 | C |
| 10/15 | Tax Distribution | 0 | 49.36 | C |
| 10/16 | Tax Distribution | 0 | 55.54 | C |



Yavapai County Treasurer

Monthly Statement

Date Range: 10/1/2025 to 10/31/2025

| | | | | |
|-----------------------------------|------------------|---|-------------------------------|---|
| 10/16 | Tax Distribution | 0 | 2.52 | C |
| 10/16 | Tax Distribution | 0 | 12.04 | C |
| 10/17 | Tax Distribution | 0 | 7.79 | C |
| 10/20 | Tax Distribution | 0 | 118.49 | C |
| 10/21 | Tax Distribution | 0 | 8.84 | C |
| 10/22 | Tax Distribution | 0 | 13.68 | C |
| 10/22 | Tax Distribution | 0 | 15.17 | C |
| 10/24 | Tax Distribution | 0 | 61.24 | C |
| 10/27 | Tax Distribution | 0 | 16.75 | C |
| 10/28 | Tax Distribution | 0 | 4.80 | C |
| 10/29 | Tax Distribution | 0 | 12.10 | C |
| 10/29 | Tax Distribution | 0 | 233.41 | C |
| 11100.2025 2025 Real Estate Taxes | | | Source Code Total: 189,556.05 | |
| 10/01 | Tax Distribution | 0 | 8.42 | C |
| 10/01 | Tax Distribution | 0 | 1,520.09 | C |
| 10/01 | Tax Distribution | 0 | 270.74 | C |
| 10/01 | Tax Distribution | 0 | 20.35 | C |
| 10/01 | Tax Distribution | 0 | 292.07 | C |
| 10/02 | Tax Distribution | 0 | 482.53 | C |
| 10/02 | Tax Distribution | 0 | 201.80 | C |
| 10/02 | Tax Distribution | 0 | 1,477.62 | C |
| 10/02 | Tax Distribution | 0 | 586.64 | C |
| 10/02 | Tax Distribution | 0 | 136.23 | C |
| 10/02 | Tax Distribution | 0 | 134.60 | C |
| 10/03 | Tax Distribution | 0 | 240.47 | C |
| 10/03 | Tax Distribution | 0 | 33.52 | C |
| 10/03 | Tax Distribution | 0 | 1,426.89 | C |
| 10/03 | Tax Distribution | 0 | 281.92 | C |
| 10/03 | Tax Distribution | 0 | 400.14 | C |
| 10/03 | Tax Distribution | 0 | 700.35 | C |
| 10/06 | Tax Distribution | 0 | 1,897.50 | C |
| 10/06 | Tax Distribution | 0 | 286.00 | C |
| 10/06 | Tax Distribution | 0 | 2,318.39 | C |
| 10/06 | Tax Distribution | 0 | 796.89 | C |
| 10/06 | Tax Distribution | 0 | 1,052.07 | C |
| 10/06 | Tax Distribution | 0 | 647.22 | C |
| 10/07 | Tax Distribution | 0 | 545.90 | C |
| 10/07 | Tax Distribution | 0 | 1,462.55 | C |
| 10/07 | Tax Distribution | 0 | 643.18 | C |
| 10/07 | Tax Distribution | 0 | 94.96 | C |
| 10/07 | Tax Distribution | 0 | 299.64 | C |
| 10/08 | Tax Distribution | 0 | 192.73 | C |
| 10/08 | Tax Distribution | 0 | 318.26 | C |



Yavapai County Treasurer

Monthly Statement

Date Range: 10/1/2025 to 10/31/2025

| | | | | |
|-------|------------------|---|----------|---|
| 10/08 | Tax Distribution | 0 | 1,593.82 | C |
| 10/08 | Tax Distribution | 0 | 520.52 | C |
| 10/08 | Tax Distribution | 0 | 431.93 | C |
| 10/08 | Tax Distribution | 0 | 495.31 | C |
| 10/09 | Tax Distribution | 0 | 335.67 | C |
| 10/09 | Tax Distribution | 0 | 379.44 | C |
| 10/09 | Tax Distribution | 0 | 1,851.16 | C |
| 10/09 | Tax Distribution | 0 | 690.60 | C |
| 10/09 | Tax Distribution | 0 | 406.39 | C |
| 10/09 | Tax Distribution | 0 | 254.64 | C |
| 10/10 | Tax Distribution | 0 | 272.59 | C |
| 10/10 | Tax Distribution | 0 | 332.86 | C |
| 10/10 | Tax Distribution | 0 | 1,333.21 | C |
| 10/10 | Tax Distribution | 0 | 525.34 | C |
| 10/10 | Tax Distribution | 0 | 1,182.77 | C |
| 10/10 | Tax Distribution | 0 | 594.33 | C |
| 10/13 | Tax Distribution | 0 | 533.19 | C |
| 10/13 | Tax Distribution | 0 | 3,351.61 | C |
| 10/13 | Tax Distribution | 0 | 117.96 | C |
| 10/13 | Tax Distribution | 0 | 242.66 | C |
| 10/13 | Tax Distribution | 0 | 659.66 | C |
| 10/13 | Tax Distribution | 0 | 851.52 | C |
| 10/13 | Tax Distribution | 0 | 221.03 | C |
| 10/14 | Tax Distribution | 0 | 334.68 | C |
| 10/14 | Tax Distribution | 0 | 1,676.62 | C |
| 10/14 | Tax Distribution | 0 | 145.42 | C |
| 10/14 | Tax Distribution | 0 | 661.53 | C |
| 10/14 | Tax Distribution | 0 | 432.43 | C |
| 10/14 | Tax Distribution | 0 | 120.31 | C |
| 10/14 | Tax Distribution | 0 | 85.97 | C |
| 10/15 | Tax Distribution | 0 | 40.25 | C |
| 10/15 | Tax Distribution | 0 | 471.69 | C |
| 10/15 | Tax Distribution | 0 | 376.53 | C |
| 10/15 | Tax Distribution | 0 | 1,157.16 | C |
| 10/15 | Tax Distribution | 0 | 711.21 | C |
| 10/15 | Tax Distribution | 0 | 343.90 | C |
| 10/15 | Tax Distribution | 0 | 411.77 | C |
| 10/16 | Tax Distribution | 0 | 199.36 | C |
| 10/16 | Tax Distribution | 0 | 89.91 | C |
| 10/16 | Tax Distribution | 0 | 449.95 | C |
| 10/16 | Tax Distribution | 0 | 1,788.66 | C |
| 10/16 | Tax Distribution | 0 | 311.27 | C |
| 10/16 | Tax Distribution | 0 | 764.42 | C |



Yavapai County Treasurer

Monthly Statement

Date Range: 10/1/2025 to 10/31/2025

| | | | | |
|-------|------------------|---|----------|---|
| 10/16 | Tax Distribution | 0 | 309.69 | C |
| 10/17 | Tax Distribution | 0 | 798.17 | C |
| 10/17 | Tax Distribution | 0 | 689.51 | C |
| 10/17 | Tax Distribution | 0 | 3.45 | C |
| 10/17 | Tax Distribution | 0 | 1,039.31 | C |
| 10/17 | Tax Distribution | 0 | 235.98 | C |
| 10/17 | Tax Distribution | 0 | 1,063.24 | C |
| 10/17 | Tax Distribution | 0 | 101.41 | C |
| 10/20 | Tax Distribution | 0 | 5,872.47 | C |
| 10/20 | Tax Distribution | 0 | 1,011.68 | C |
| 10/20 | Tax Distribution | 0 | 720.50 | C |
| 10/20 | Tax Distribution | 0 | 75.12 | C |
| 10/20 | Tax Distribution | 0 | 135.18 | C |
| 10/21 | Tax Distribution | 0 | 395.88 | C |
| 10/21 | Tax Distribution | 0 | 1,530.09 | C |
| 10/21 | Tax Distribution | 0 | 2,292.57 | C |
| 10/21 | Tax Distribution | 0 | 867.88 | C |
| 10/21 | Tax Distribution | 0 | 795.03 | C |
| 10/21 | Tax Distribution | 0 | 1,496.51 | C |
| 10/21 | Tax Distribution | 0 | 844.82 | C |
| 10/22 | Tax Distribution | 0 | 189.32 | C |
| 10/22 | Tax Distribution | 0 | 383.33 | C |
| 10/22 | Tax Distribution | 0 | 880.95 | C |
| 10/22 | Tax Distribution | 0 | 546.02 | C |
| 10/22 | Tax Distribution | 0 | 306.89 | C |
| 10/22 | Tax Distribution | 0 | 232.58 | C |
| 10/23 | Tax Distribution | 0 | 29.40 | C |
| 10/23 | Tax Distribution | 0 | 315.83 | C |
| 10/23 | Tax Distribution | 0 | 1,292.77 | C |
| 10/23 | Tax Distribution | 0 | 292.27 | C |
| 10/23 | Tax Distribution | 0 | 193.42 | C |
| 10/23 | Tax Distribution | 0 | 51.38 | C |
| 10/24 | Tax Distribution | 0 | 2,088.08 | C |
| 10/24 | Tax Distribution | 0 | 55.55 | C |
| 10/24 | Tax Distribution | 0 | 298.23 | C |
| 10/24 | Tax Distribution | 0 | 654.15 | C |
| 10/24 | Tax Distribution | 0 | 286.19 | C |
| 10/27 | Tax Distribution | 0 | 447.44 | C |
| 10/27 | Tax Distribution | 0 | 148.21 | C |
| 10/27 | Tax Distribution | 0 | 1,119.15 | C |
| 10/27 | Tax Distribution | 0 | 162.55 | C |
| 10/27 | Tax Distribution | 0 | 381.53 | C |
| 10/27 | Tax Distribution | 0 | 84.96 | C |



Yavapai County Treasurer

Monthly Statement

Date Range: 10/1/2025 to 10/31/2025

| | | | | |
|---|------------------|---|--------------------------|---|
| 10/28 | Tax Distribution | 0 | 807.28 | C |
| 10/28 | Tax Distribution | 0 | 302.98 | C |
| 10/28 | Tax Distribution | 0 | 1,288.30 | C |
| 10/28 | Tax Distribution | 0 | 590.83 | C |
| 10/28 | Tax Distribution | 0 | 1,305.28 | C |
| 10/28 | Tax Distribution | 0 | 813.38 | C |
| 10/28 | Tax Distribution | 0 | 590.87 | C |
| 10/29 | Tax Distribution | 0 | 100.40 | C |
| 10/29 | Tax Distribution | 0 | 408.23 | C |
| 10/29 | Tax Distribution | 0 | 2,029.76 | C |
| 10/29 | Tax Distribution | 0 | 28.22 | C |
| 10/29 | Tax Distribution | 0 | 753.26 | C |
| 10/29 | Tax Distribution | 0 | 232.99 | C |
| 10/29 | Tax Distribution | 0 | 555.21 | C |
| 10/30 | Tax Distribution | 0 | 169.90 | C |
| 10/30 | Tax Distribution | 0 | 78,112.49 | C |
| 10/30 | Tax Distribution | 0 | 2,023.49 | C |
| 10/30 | Tax Distribution | 0 | 506.44 | C |
| 10/30 | Tax Distribution | 0 | 1,237.65 | C |
| 10/30 | Tax Distribution | 0 | 495.39 | C |
| 10/30 | Tax Distribution | 0 | 200.61 | C |
| 10/31 | Tax Distribution | 0 | 246.44 | C |
| 10/31 | Tax Distribution | 0 | 14,648.62 | C |
| 10/31 | Tax Distribution | 0 | 1,818.55 | C |
| 10/31 | Tax Distribution | 0 | 839.65 | C |
| 10/31 | Tax Distribution | 0 | 776.03 | C |
| 10/31 | Tax Distribution | 0 | 1,051.13 | C |
| 10/31 | Tax Distribution | 0 | 383.06 | C |
| 12100.2014 2014 Personal Property Taxes | | | Source Code Total: .65 | |
| 10/27 | Tax Distribution | 0 | .65 | C |
| 12100.2020 2020 Personal Property Taxes | | | Source Code Total: 31.05 | |
| 10/14 | Tax Distribution | 0 | 25.64 | C |
| 10/20 | Tax Distribution | 0 | 5.41 | C |
| 12100.2021 2021 Personal Property Taxes | | | Source Code Total: 9.06 | |
| 10/20 | Tax Distribution | 0 | 5.74 | C |
| 10/31 | Tax Distribution | 0 | 3.32 | C |
| 12100.2022 2022 Personal Property Taxes | | | Source Code Total: 4.32 | |
| 10/20 | Tax Distribution | 0 | 1.12 | C |
| 10/31 | Tax Distribution | 0 | 3.20 | C |
| 12100.2023 2023 Personal Property Taxes | | | Source Code Total: 12.69 | |
| 10/28 | Tax Distribution | 0 | 9.75 | C |
| 10/31 | Tax Distribution | 0 | 2.94 | C |



Yavapai County Treasurer

Monthly Statement

Date Range: 10/1/2025 to 10/31/2025

| | | | | |
|---|------------------|---|-----------------------------|---|
| 12100.2024 2024 Personal Property Taxes | | | Source Code Total: 57.98 | |
| 10/06 | Tax Distribution | 0 | 10.08 | C |
| 10/15 | Tax Distribution | 0 | 16.63 | C |
| 10/27 | Tax Distribution | 0 | 19.18 | C |
| 10/28 | Tax Distribution | 0 | 8.89 | C |
| 10/30 | Tax Distribution | 0 | .57 | C |
| 10/31 | Tax Distribution | 0 | 2.63 | C |
| 12100.2025 2025 Personal Property Taxes | | | Source Code Total: 3,038.45 | |
| 10/01 | Tax Distribution | 0 | 13.90 | C |
| 10/01 | Tax Distribution | 0 | 55.48 | C |
| 10/02 | Tax Distribution | 0 | 2.08 | C |
| 10/02 | Tax Distribution | 0 | .60 | C |
| 10/02 | Tax Distribution | 0 | 20.34 | C |
| 10/02 | Tax Distribution | 0 | 51.81 | C |
| 10/02 | Tax Distribution | 0 | 13.26 | C |
| 10/03 | Tax Distribution | 0 | 18.38 | C |
| 10/03 | Tax Distribution | 0 | 83.97 | C |
| 10/03 | Tax Distribution | 0 | 15.07 | C |
| 10/03 | Tax Distribution | 0 | 6.84 | C |
| 10/06 | Tax Distribution | 0 | 76.54 | C |
| 10/06 | Tax Distribution | 0 | 105.78 | C |
| 10/06 | Tax Distribution | 0 | 3.59 | C |
| 10/06 | Tax Distribution | 0 | 61.65 | C |
| 10/06 | Tax Distribution | 0 | .59 | C |
| 10/07 | Tax Distribution | 0 | 16.46 | C |
| 10/07 | Tax Distribution | 0 | 20.84 | C |
| 10/07 | Tax Distribution | 0 | 16.05 | C |
| 10/08 | Tax Distribution | 0 | 7.56 | C |
| 10/08 | Tax Distribution | 0 | 9.21 | C |
| 10/08 | Tax Distribution | 0 | 31.85 | C |
| 10/08 | Tax Distribution | 0 | 18.20 | C |
| 10/08 | Tax Distribution | 0 | 13.54 | C |
| 10/08 | Tax Distribution | 0 | 55.37 | C |
| 10/09 | Tax Distribution | 0 | 7.04 | C |
| 10/09 | Tax Distribution | 0 | 32.78 | C |
| 10/09 | Tax Distribution | 0 | 19.30 | C |
| 10/09 | Tax Distribution | 0 | 17.73 | C |
| 10/10 | Tax Distribution | 0 | 11.08 | C |
| 10/10 | Tax Distribution | 0 | 39.71 | C |
| 10/10 | Tax Distribution | 0 | 2.10 | C |
| 10/13 | Tax Distribution | 0 | 39.13 | C |
| 10/13 | Tax Distribution | 0 | 176.00 | C |
| 10/13 | Tax Distribution | 0 | 1.31 | C |



Yavapai County Treasurer

Monthly Statement

Date Range: 10/1/2025 to 10/31/2025

| | | | | |
|-------|------------------|---|--------|---|
| 10/13 | Tax Distribution | 0 | 11.35 | C |
| 10/13 | Tax Distribution | 0 | 8.69 | C |
| 10/13 | Tax Distribution | 0 | 2.28 | C |
| 10/14 | Tax Distribution | 0 | 1.43 | C |
| 10/14 | Tax Distribution | 0 | 33.35 | C |
| 10/14 | Tax Distribution | 0 | 10.79 | C |
| 10/14 | Tax Distribution | 0 | 29.74 | C |
| 10/14 | Tax Distribution | 0 | 17.71 | C |
| 10/15 | Tax Distribution | 0 | 2.98 | C |
| 10/15 | Tax Distribution | 0 | 13.53 | C |
| 10/15 | Tax Distribution | 0 | 1.76 | C |
| 10/15 | Tax Distribution | 0 | 15.47 | C |
| 10/15 | Tax Distribution | 0 | 224.42 | C |
| 10/15 | Tax Distribution | 0 | 20.97 | C |
| 10/16 | Tax Distribution | 0 | 36.70 | C |
| 10/16 | Tax Distribution | 0 | 7.05 | C |
| 10/16 | Tax Distribution | 0 | 16.98 | C |
| 10/16 | Tax Distribution | 0 | 70.05 | C |
| 10/16 | Tax Distribution | 0 | 29.26 | C |
| 10/17 | Tax Distribution | 0 | 27.28 | C |
| 10/17 | Tax Distribution | 0 | 9.78 | C |
| 10/17 | Tax Distribution | 0 | 39.51 | C |
| 10/17 | Tax Distribution | 0 | 3.79 | C |
| 10/20 | Tax Distribution | 0 | 2.87 | C |
| 10/20 | Tax Distribution | 0 | 60.07 | C |
| 10/20 | Tax Distribution | 0 | 144.15 | C |
| 10/20 | Tax Distribution | 0 | 2.39 | C |
| 10/21 | Tax Distribution | 0 | 26.40 | C |
| 10/21 | Tax Distribution | 0 | 117.78 | C |
| 10/21 | Tax Distribution | 0 | 89.17 | C |
| 10/21 | Tax Distribution | 0 | 52.93 | C |
| 10/21 | Tax Distribution | 0 | 6.69 | C |
| 10/21 | Tax Distribution | 0 | 37.85 | C |
| 10/21 | Tax Distribution | 0 | 18.04 | C |
| 10/22 | Tax Distribution | 0 | 9.92 | C |
| 10/22 | Tax Distribution | 0 | 15.07 | C |
| 10/22 | Tax Distribution | 0 | 6.97 | C |
| 10/22 | Tax Distribution | 0 | 10.65 | C |
| 10/22 | Tax Distribution | 0 | 4.12 | C |
| 10/23 | Tax Distribution | 0 | 19.22 | C |
| 10/23 | Tax Distribution | 0 | 1.14 | C |
| 10/23 | Tax Distribution | 0 | 31.84 | C |
| 10/23 | Tax Distribution | 0 | 4.18 | C |



Yavapai County Treasurer

Monthly Statement

Date Range: 10/1/2025 to 10/31/2025

| | | | | |
|---|---------------------|---|---------------------------|---|
| 10/23 | Tax Distribution | 0 | 1.52 | C |
| 10/24 | Tax Distribution | 0 | 26.15 | C |
| 10/24 | Tax Distribution | 0 | 6.32 | C |
| 10/24 | Tax Distribution | 0 | 19.15 | C |
| 10/24 | Tax Distribution | 0 | 6.21 | C |
| 10/27 | Tax Distribution | 0 | 3.29 | C |
| 10/27 | Tax Distribution | 0 | 46.39 | C |
| 10/27 | Tax Distribution | 0 | 4.49 | C |
| 10/27 | Tax Distribution | 0 | 8.99 | C |
| 10/28 | Tax Distribution | 0 | 119.27 | C |
| 10/28 | Tax Distribution | 0 | 15.06 | C |
| 10/28 | Tax Distribution | 0 | 42.24 | C |
| 10/28 | Tax Distribution | 0 | 18.28 | C |
| 10/28 | Tax Distribution | 0 | 17.91 | C |
| 10/28 | Tax Distribution | 0 | 21.76 | C |
| 10/28 | Tax Distribution | 0 | 31.59 | C |
| 10/29 | Tax Distribution | 0 | 28.42 | C |
| 10/29 | Tax Distribution | 0 | 25.38 | C |
| 10/29 | Tax Distribution | 0 | 35.68 | C |
| 10/29 | Tax Distribution | 0 | 17.29 | C |
| 10/30 | Tax Distribution | 0 | 50.69 | C |
| 10/30 | Tax Distribution | 0 | 15.24 | C |
| 10/30 | Tax Distribution | 0 | 4.90 | C |
| 10/30 | Tax Distribution | 0 | 23.52 | C |
| 10/30 | Tax Distribution | 0 | 30.82 | C |
| 10/30 | Tax Distribution | 0 | 17.66 | C |
| 10/31 | Tax Distribution | 0 | 14.34 | C |
| 10/31 | Tax Distribution | 0 | 9.84 | C |
| 10/31 | Tax Distribution | 0 | 2.83 | C |
| 10/31 | Tax Distribution | 0 | 7.93 | C |
| 10/31 | Tax Distribution | 0 | 3.83 | C |
| 38109.0 Interest on Investments St Treas | | | Source Code Total: 189.79 | |
| 10/08 | Investment Interest | 0 | 189.79 | C |
| 38111.0 Interest on Investments | | | Source Code Total: 6.57 | |
| 10/02 | Investment Interest | 0 | 6.57 | C |
| 38113.0 Interest on Investments-Wells Fargo | | | Source Code Total: 92.06 | |
| 10/08 | Investment Interest | 0 | 92.06 | C |
| 6065640700 Chino Valley Fire Dist BDS Ending Balance: 281,387.11 | | | | |

11/10/25
5:13:35 PM

Chino Valley Fire District
Bank Reconciliation Summary
For the Bank Statement ending: 10/31/2025

Page: 1

| BANK CONTROL ID: BDS - YAVAPAI COUNTY TREASURER | | DESC: BOND DEBT SERVICE | ACCOUNT NO: 6-65640-7000 |
|---|----------|-------------------------|--------------------------|
| Beginning Balance: | 10/01/25 | | \$87,607.06 |
| Deposits and Credits: | | | \$193,780.05 |
| Checks and Charges: | | | \$0.00 |
| Adjustments: | | | \$0.00 |
| Ending Balance Per Reconciliation: | | | \$281,387.11 |
| Ending Balance Per Bank Statement: | 10/31/25 | | \$281,387.11 |
| * Outstanding Deposits and Credits: | 10/31/25 | | \$0.00 |
| * Outstanding Checks and Charges: | 10/31/25 | | \$0.00 |
| Ending Book Balance: | | | \$281,387.11 |

* Outstanding amounts are all outstanding credits and charges dated prior or equal to the Reconciliation date.

Chino Valley Fire District
BR Checks and Charges Cleared
For the Bank Statement ending:

| Date | Document | Description | Module | Company | Amount |
|------|----------|-------------|--------|---------|--------|
|------|----------|-------------|--------|---------|--------|

TOTAL CHECKS AND CHARGES CLEARED:

Chino Valley Fire District
BR Checks and Charges Outstanding
For the Bank Statement ending:

| <u>Date</u> | <u>Document</u> | <u>Description</u> | <u>Module</u> | <u>Company</u> | <u>Amount</u> |
|-------------|-----------------|--------------------|---------------|----------------|---------------|
|-------------|-----------------|--------------------|---------------|----------------|---------------|

TOTAL CHECKS AND CHARGES OUTSTANDING:

11/10/25
5:13:20 PM

Chino Valley Fire District
BR Deposits and Credits Cleared
For the Bank Statement ending: 10/31/25

Page: 1

| BDS | | Yavapai County Treasurer | Bond Debt Service | | 6-65640-7000 |
|-------------------------------------|-------------------|--------------------------------|-------------------|---------|--------------|
| Date | Document | Description | Module | Company | Amount |
| 10/31/25 | Cash With Yav Cty | BDS Tax & Interest Revenue OCT | GL | CHINOV | \$193,780.05 |
| TOTAL DEPOSITS AND CREDITS CLEARED: | | | | | \$193,780.05 |

Chino Valley Fire District
BR Deposits and Credits Outstanding
For the Bank Statement ending:

| Date | Document | Description | Module | Company | Amount |
|------|----------|-------------|--------|---------|--------|
|------|----------|-------------|--------|---------|--------|

TOTAL DEPOSITS AND CREDITS OUTSTANDING:

Chino Valley Fire District
Bank Reconciliation Register

| Document Number | Date | BR Status | Void? | Description | Date Cleared | Amount |
|---|----------|-----------|-------|--------------------------------|--------------|--------------|
| MODULE: JOURNAL ENTRIES FROM GENERAL LEDGER | | | | | | |
| BANK CONTROL ID: BDS - YAVAPAI COUNTY TREASURER | | | | | | |
| Cash With Yav Cty | 10/31/25 | Marked | No | BDS Tax & Interest Revenue OCT | 11/10/25 | \$193,780.05 |
| SUB TOTAL FOR BANK: | | | | | | \$193,780.05 |
| TOTAL FOR MODULE: | | | | | | \$193,780.05 |

11/10/25
5:12:31 PM

Chino Valley Fire District
BR Adjustments Report
For the Bank Statement ending:

Page: 1

| Date | Document | Description | GL Account | Offset Amt | Adj. Amt |
|------|----------|-------------|------------|------------|----------|
|------|----------|-------------|------------|------------|----------|

DOCUMENT:

ADJUSTMENT DOCUMENT " TOTAL:

TOTAL FOR ALL ADJUSTMENTS:

11/10/25
5:13:42 PM

Chino Valley Fire District
Income Statement
(Original Budget to Actual Comparison)
For the period of 10/1/2025 Through 10/31/2025

Fund: (40) Bond Service Fund

| | Account | Actual | Current Period Budget | Variance | % | Actual | Year To Date Budget |
|--------------------------------------|------------|---------------------|--------------------------|---------------------|--------------|-----------------------|------------------------|
| <u>Revenues</u> | | | | | | | |
| Real Estate Tax | 4042000002 | \$190,337.43 | \$0.00 | \$190,337.43 | 0.0% | \$634,318.68 | \$0.00 |
| Personal Tax Revenue | 4042050000 | 3,154.20 | 0.00 | 3,154.20 | 0.0 | 14,221.90 | 0.00 |
| Misc Revenue | 4051000000 | 0.00 | 0.00 | 0.00 | 0.0 | 36.78 | 0.00 |
| Net Revenues | | \$193,491.63 | \$0.00 | \$193,491.63 | 0.0 % | \$648,577.36 | \$0.00 |
| Income (Loss) from Operations | | \$193,491.63 | \$0.00 | \$193,491.63 | 0.0% | \$648,577.36 | \$0.00 |
| <u>Other Income (Expense)</u> | | | | | | | |
| Bond Debt Service Interest Revenue | 4043000000 | \$288.42 | \$0.00 | \$288.42 | 0.0% | \$14,891.93 | \$0.00 |
| Bond Debt Service Principle Payment | 4060000000 | 0.00 | 0.00 | 0.00 | 0.0 | (380,000.00) | 0.00 |
| Bond Debt Service Interest Expense | 4061000000 | 0.00 | 0.00 | 0.00 | 0.0 | (64,794.32) | 0.00 |
| Total Other Income (Expense) | | \$288.42 | \$0.00 | \$288.42 | 0.0 % | \$(429,902.39) | \$0.00 |
| Net Income (Loss) | | \$193,780.05 | \$0.00 | \$193,780.05 | 0.0% | \$218,674.97 | \$0.00 |

11/10/25
5:13:50 PM

Chino Valley Fire District
Balance Sheet
As of 10/31/2025

Fund: (40) Bond Service Fund
Account: (1105) Not Defined

| Assets | | |
|---|--------------|---------------------|
| <u>Current Assets</u> | | |
| Bond Debt Service | \$281,387.11 | |
| Total Current Assets | | \$281,387.11 |
| Total Assets | | \$281,387.11 |
| Total Liabilities and Net Assets | | \$0.00 |

11/10/25
5:14:00 PM

Chino Valley Fire District
GL Account Ledger - Detail By Period
10/1/2025 through 10/31/2025

| Batch | Journal | Entry # | Date | Job | Document | Description | Debits |
|---------------------------|---------|---------|-------------------|-----|-------------------|-------------------------------------|--------------|
| 40.1105.0.0.000 | | | BOND DEBT SERVICE | | | | |
| 2463 | GJ | 144690 | 10/31/25 | | Cash With Yav Cty | BDS Tax & Interest Revenue OCT 2025 | 193,780.05 |
| BOND DEBT SERVICE TOTALS: | | | | | | | \$193,780.05 |
| TOTAL OF LEDGER: | | | | | | | \$193,780.05 |

11/10/25
5:14:08 PM

Chino Valley Fire District
GL Trial Balance Worksheet
For The Period of 10/1/2025 through 10/31/2025

| Account | Description | Balances | | |
|-----------------|-------------------|-------------|--------------|---------|
| | | Beginning | Debits | Credits |
| 40.1105.0.0.000 | Bond Debt Service | \$87,607.06 | \$193,780.05 | \$0.00 |
| TOTALS: | | \$87,607.06 | \$193,780.05 | \$0.00 |

* Inactive accounts are marked and appear in grey.

formstack sign Document Completion Certificate

Document Reference : e4042ede-323f-46eb-a2c3-879e12cd836c
Document Title : OCTOBER 2025 CHINO BDS BANK RECONCILIATION
Document Region : Northern Virginia
Sender Name : Karen Mauldin
Sender Email : kmauldin@cazfire.gov
Total Document Pages : 21
Secondary Security : Not Required

Participants

1. Karen Mauldin (kmauldin@cazfire.gov)
2. Cody Rose (crose@cazfire.gov)
3. John Feddema (jfeddema@cazfire.gov)

CC

1. sdixson@cazfire.gov
2. dkrizo@cazfire.gov

Document History

| Timestamp | Description |
|-------------------------------|--|
| 11/10/2025 07:32PM US/Eastern | Sender downloaded document. |
| 11/10/2025 07:34PM US/Eastern | Document sent by Karen Mauldin (kmauldin@cazfire.gov). |
| 11/10/2025 07:35PM US/Eastern | Email sent to Karen Mauldin (kmauldin@cazfire.gov). |
| 11/10/2025 07:36PM US/Eastern | Document viewed by Karen Mauldin (kmauldin@cazfire.gov). 24.117.179.98 Mozilla/5.0 (Windows NT 10.0; Win64; x64) AppleWebKit/537.36 (KHTML, like Gecko) Chrome/132.0.0.0 Safari/537.36 |
| 11/10/2025 07:36PM US/Eastern | Karen Mauldin (kmauldin@cazfire.gov) has agreed to terms of service and to do business electronically with Karen Mauldin (kmauldin@cazfire.gov). 24.117.179.98 Mozilla/5.0 (Windows NT 10.0; Win64; x64) AppleWebKit/537.36 (KHTML, like Gecko) Chrome/132.0.0.0 Safari/537.36 |
| 11/10/2025 07:36PM US/Eastern | Signed by Karen Mauldin (kmauldin@cazfire.gov). 24.117.179.98 Mozilla/5.0 (Windows NT 10.0; Win64; x64) AppleWebKit/537.36 (KHTML, like Gecko) Chrome/132.0.0.0 Safari/537.36 |
| 11/10/2025 07:36PM US/Eastern | Email sent to Cody Rose (crose@cazfire.gov). |
| 11/10/2025 09:08PM US/Eastern | Document viewed by Cody Rose (crose@cazfire.gov). 184.170.184.249 Mozilla/5.0 (iPhone; CPU iPhone OS 18_7 like Mac OS X) AppleWebKit/605.1.15 (KHTML, like Gecko) Version/26.0.1 Mobile/15E148 Safari/604.1 |

Document History

| Timestamp | Description |
|-------------------------------|---|
| 11/10/2025 09:08PM US/Eastern | Cody Rose (crose@cazfire.gov) has agreed to terms of service and to do business electronically with Karen Mauldin (kmauldin@cazfire.gov). 184.170.184.249 Mozilla/5.0 (iPhone; CPU iPhone OS 18_7 like Mac OS X) AppleWebKit/605.1.15 (KHTML, like Gecko) Version/26.0.1 Mobile/15E148 Safari/604.1 |
| 11/10/2025 09:08PM US/Eastern | Signed by Cody Rose (crose@cazfire.gov). 184.170.184.249 Mozilla/5.0 (iPhone; CPU iPhone OS 18_7 like Mac OS X) AppleWebKit/605.1.15 (KHTML, like Gecko) Version/26.0.1 Mobile/15E148 Safari/604.1 |
| 11/10/2025 09:08PM US/Eastern | Email sent to John Feddema (jfeddema@cazfire.gov). |
| 11/14/2025 05:57PM US/Eastern | Document viewed by John Feddema (jfeddema@cazfire.gov). 172.83.103.182 Mozilla/5.0 (Windows NT 10.0; Win64; x64) AppleWebKit/537.36 (KHTML, like Gecko) Chrome/142.0.0.0 Safari/537.36 |
| 11/14/2025 05:57PM US/Eastern | John Feddema (jfeddema@cazfire.gov) has agreed to terms of service and to do business electronically with Karen Mauldin (kmauldin@cazfire.gov). 172.83.103.182 Mozilla/5.0 (Windows NT 10.0; Win64; x64) AppleWebKit/537.36 (KHTML, like Gecko) Chrome/142.0.0.0 Safari/537.36 |
| 11/14/2025 05:57PM US/Eastern | Signed by John Feddema (jfeddema@cazfire.gov). 172.83.103.182 Mozilla/5.0 (Windows NT 10.0; Win64; x64) AppleWebKit/537.36 (KHTML, like Gecko) Chrome/142.0.0.0 Safari/537.36 |
| 11/14/2025 05:57PM US/Eastern | Document copy sent to Cody Rose (crose@cazfire.gov). |
| 11/14/2025 05:57PM US/Eastern | Document copy sent to Karen Mauldin (kmauldin@cazfire.gov). |
| 11/14/2025 05:57PM US/Eastern | Document copy sent to sdixson@cazfire.gov. |
| 11/14/2025 05:57PM US/Eastern | Document copy sent to dkrizo@cazfire.gov. |
| 11/14/2025 05:57PM US/Eastern | Document copy sent to Karen Mauldin (kmauldin@cazfire.gov). |
| 11/14/2025 05:57PM US/Eastern | Document copy sent to John Feddema (jfeddema@cazfire.gov). |

CHINO VALLEY FIRE DISTRICT
BOND DEBT SERVICE FUND BANK RECONCILIATION NOVEMBER 2025

| Reconciliation: | | |
|--|-----------|-------------------|
| Beginning Balance: | \$ | 281,387.11 |
| Tax Revenue: | \$ | 34,343.14 |
| Interest Revenue: | \$ | 479.90 |
| Principle/Interest Payments: | \$ | - |
| Interest Paid on Tax Roll Corrections: | \$ | - |
| Other: | \$ | - |
| Ending Balance: | \$ | 316,210.15 |

| Bank Statement Balance: | | |
|--------------------------------|-----------|-------------------|
| Balance Per Bank: | \$ | 316,210.15 |
| Outstanding Checks: | \$ | - |
| Outstanding Deposits: | \$ | - |
| Ending Balance: | \$ | 316,210.15 |

Difference Between Balances: \$ -

| Deposits Per Bank Statement: | | |
|-------------------------------------|-----------|------------------|
| Real Estate Taxes: | \$ | 33,162.06 |
| Personal Property Taxes: | \$ | 1,181.08 |
| Interest Revenue: | \$ | 479.90 |
| Other: | \$ | - |
| Ending Balance: | \$ | 34,823.04 |

Reconciliation Approved By: John Feddema
 John Feddema, Fire Chief

Reconciliation Reviewed By: Cody Rose
 Cody Rose, Assistant Chief of Administration

Reconciliation Prepared By: Tessa Jordan
 Tessa Jordan, Finance Specialist

CHINO VALLEY FIRE DISTRICT
BOND DEBT FUND - NOVEMBER 2025

| | | |
|-------------------------|----|-----------|
| Real Estate Taxes: | \$ | 33,162.06 |
| UPP Taxes: | \$ | 1,181.08 |
| Interest Received: | \$ | 479.90 |
| Other: Bos Sale - Taxes | \$ | - |

| | | |
|---------------|-----------|------------------|
| TOTAL: | \$ | 34,823.04 |
|---------------|-----------|------------------|



Yavapai County Treasurer

Monthly Statement

Date Range: 11/1/2025 to 11/30/2025

Chino Valley Fire Dist BDS
Fund: 6065640700

| 6065640700 | | Chino Valley Fire Dist BDS | | |
|----------------|------------|----------------------------|-----------------------|------------|
| Begin Balance: | 281,387.11 | 73,334.11 | | |
| Income: | 34,823.04 | 242,876.04 | | |
| LOC Advance: | .00 | .00 | | |
| Expense: | .00 | .00 | LOC: | .00 |
| LOC Payments: | .00 | .00 | Warrants Outstanding: | .00 |
| Cash Balance: | 316,210.15 | 316,210.15 | End: | 316,210.15 |

Monthly Statement Summary

| Source Code | Description | | MTDAmount | YTDAmount |
|---------------------------------------|--------------------------------------|--------------------|------------|------------|
| 6065640700 Chino Valley Fire Dist BDS | | Beginning Balance: | 281,387.11 | 73,334.11 |
| 11100.2023 | 2023 Real Estate Taxes | | (4.74) | (4.74) |
| 11100.2024 | 2024 Real Estate Taxes 33,162.06 | | 997.11 | 6,195.09 |
| 11100.2025 | 2025 Real Estate Taxes | | 32,169.69 | 228,589.85 |
| 12100.2014 | 2014 Personal Property Taxes | | .00 | 2.63 |
| 12100.2017 | 2017 Personal Property Taxes | | .00 | .79 |
| 12100.2020 | 2020 Personal Property Taxes | | .00 | 40.22 |
| 12100.2021 | 2021 Personal Property Taxes | | .00 | 22.43 |
| 12100.2022 | 2022 Personal Property Taxes | | 3.62 | 38.40 |
| 12100.2023 | 2023 Personal Property Taxes | | .00 | 113.50 |
| 12100.2024 | 2024 Personal Property Taxes 1181.08 | | 18.97 | 547.05 |
| 12100.2025 | 2025 Personal Property Taxes | | 1,158.49 | 4,442.60 |
| 38109.0 | Interest on Investments St Treas | | 341.86 | 1,871.86 |
| 38111.0 | Interest on Investments 479.90 | | 13.98 | 80.70 |
| 38113.0 | Interest on Investments-Wells Fargo | | 124.06 | 935.66 |
| | | Ending Balance: | 316,210.15 | 316,210.15 |

Monthly Statement Detail

| Date | Notes | Doc # | Amount | C/D |
|---------------------------------------|------------------------|-------|-------------------------------|-----|
| 6065640700 Chino Valley Fire Dist BDS | | | Beginning Balance: 281,387.11 | |
| 11100.2023 | 2023 Real Estate Taxes | | Source Code Total: (4.74) | |
| 11/06 | Tax Distribution | 0 | (4.74) | C |
| 11100.2024 | 2024 Real Estate Taxes | | Source Code Total: 997.11 | |
| 11/03 | Tax Distribution | 0 | 2.26 | C |
| 11/03 | Tax Distribution | 0 | 64.50 | C |
| 11/04 | Tax Distribution | 0 | 646.75 | C |
| 11/04 | Tax Distribution | 0 | 27.87 | C |
| 11/05 | Tax Distribution | 0 | 1.23 | C |
| 11/06 | Tax Distribution | 0 | 2.83 | C |
| 11/06 | Tax Distribution | 0 | (4.55) | C |



Yavapai County Treasurer

Monthly Statement

Date Range: 11/1/2025 to 11/30/2025

| | | | | |
|-----------------------------------|------------------|---|------------------------------|---|
| 11/06 | Tax Distribution | 0 | 10.30 | C |
| 11/07 | Tax Distribution | 0 | 27.62 | C |
| 11/10 | Tax Distribution | 0 | .82 | C |
| 11/10 | Tax Distribution | 0 | 30.38 | C |
| 11/12 | Tax Distribution | 0 | 3.97 | C |
| 11/12 | Tax Distribution | 0 | 32.21 | C |
| 11/13 | Tax Distribution | 0 | 16.51 | C |
| 11/14 | Tax Distribution | 0 | 18.54 | C |
| 11/17 | Tax Distribution | 0 | 67.01 | C |
| 11/24 | Tax Distribution | 0 | 4.85 | C |
| 11/25 | Tax Distribution | 0 | 42.51 | C |
| 11/25 | Tax Distribution | 0 | 1.50 | C |
| 11100.2025 2025 Real Estate Taxes | | | Source Code Total: 32,169.69 | |
| 11/03 | Tax Distribution | 0 | 84.93 | C |
| 11/03 | Tax Distribution | 0 | 930.25 | C |
| 11/03 | Tax Distribution | 0 | 1,893.25 | C |
| 11/03 | Tax Distribution | 0 | 129.96 | C |
| 11/03 | Tax Distribution | 0 | 187.58 | C |
| 11/03 | Tax Distribution | 0 | 121.63 | C |
| 11/04 | Tax Distribution | 0 | 498.70 | C |
| 11/04 | Tax Distribution | 0 | 8.53 | C |
| 11/04 | Tax Distribution | 0 | 2,041.46 | C |
| 11/04 | Tax Distribution | 0 | 1,867.95 | C |
| 11/04 | Tax Distribution | 0 | 1,773.02 | C |
| 11/04 | Tax Distribution | 0 | 139.86 | C |
| 11/05 | Tax Distribution | 0 | 30.68 | C |
| 11/05 | Tax Distribution | 0 | (1.48) | C |
| 11/05 | Tax Distribution | 0 | 1,798.82 | C |
| 11/05 | Tax Distribution | 0 | 175.39 | C |
| 11/05 | Tax Distribution | 0 | 667.04 | C |
| 11/05 | Tax Distribution | 0 | 455.79 | C |
| 11/06 | Tax Distribution | 0 | 2.73 | C |
| 11/06 | Tax Distribution | 0 | 1,679.46 | C |
| 11/06 | Tax Distribution | 0 | 446.93 | C |
| 11/06 | Tax Distribution | 0 | 461.49 | C |
| 11/07 | Tax Distribution | 0 | 346.61 | C |
| 11/07 | Tax Distribution | 0 | 414.18 | C |
| 11/07 | Tax Distribution | 0 | 424.22 | C |
| 11/10 | Tax Distribution | 0 | 102.95 | C |
| 11/10 | Tax Distribution | 0 | 1,133.86 | C |
| 11/10 | Tax Distribution | 0 | 235.28 | C |
| 11/10 | Tax Distribution | 0 | 584.43 | C |
| 11/10 | Tax Distribution | 0 | 368.28 | C |



Yavapai County Treasurer

Monthly Statement

Date Range: 11/1/2025 to 11/30/2025

| | | | | |
|-------|------------------|---|----------|---|
| 11/12 | Tax Distribution | 0 | 52.62 | C |
| 11/12 | Tax Distribution | 0 | 319.10 | C |
| 11/12 | Tax Distribution | 0 | 145.25 | C |
| 11/12 | Tax Distribution | 0 | 666.71 | C |
| 11/13 | Tax Distribution | 0 | 47.54 | C |
| 11/13 | Tax Distribution | 0 | 690.34 | C |
| 11/13 | Tax Distribution | 0 | 169.65 | C |
| 11/13 | Tax Distribution | 0 | 438.67 | C |
| 11/14 | Tax Distribution | 0 | 208.60 | C |
| 11/14 | Tax Distribution | 0 | 393.43 | C |
| 11/14 | Tax Distribution | 0 | 204.40 | C |
| 11/17 | Tax Distribution | 0 | 1,793.09 | C |
| 11/17 | Tax Distribution | 0 | 345.48 | C |
| 11/18 | Tax Distribution | 0 | 191.02 | C |
| 11/18 | Tax Distribution | 0 | 369.85 | C |
| 11/18 | Tax Distribution | 0 | 593.36 | C |
| 11/18 | Tax Distribution | 0 | 148.14 | C |
| 11/18 | Tax Distribution | 0 | 684.34 | C |
| 11/19 | Tax Distribution | 0 | .04 | C |
| 11/19 | Tax Distribution | 0 | (23.60) | C |
| 11/19 | Tax Distribution | 0 | 746.48 | C |
| 11/19 | Tax Distribution | 0 | .18 | C |
| 11/19 | Tax Distribution | 0 | 128.68 | C |
| 11/19 | Tax Distribution | 0 | 111.64 | C |
| 11/19 | Tax Distribution | 0 | 180.37 | C |
| 11/20 | Tax Distribution | 0 | 56.39 | C |
| 11/20 | Tax Distribution | 0 | 162.93 | C |
| 11/20 | Tax Distribution | 0 | 36.93 | C |
| 11/20 | Tax Distribution | 0 | 198.27 | C |
| 11/20 | Tax Distribution | 0 | 367.81 | C |
| 11/21 | Tax Distribution | 0 | 311.97 | C |
| 11/21 | Tax Distribution | 0 | 228.64 | C |
| 11/21 | Tax Distribution | 0 | 231.55 | C |
| 11/24 | Tax Distribution | 0 | 709.36 | C |
| 11/24 | Tax Distribution | 0 | 305.44 | C |
| 11/24 | Tax Distribution | 0 | 72.31 | C |
| 11/24 | Tax Distribution | 0 | 197.28 | C |
| 11/25 | Tax Distribution | 0 | 134.27 | C |
| 11/25 | Tax Distribution | 0 | 288.49 | C |
| 11/25 | Tax Distribution | 0 | 164.89 | C |
| 11/25 | Tax Distribution | 0 | 216.46 | C |
| 11/25 | Tax Distribution | 0 | 166.00 | C |
| 11/26 | Tax Distribution | 0 | 386.10 | C |



Yavapai County Treasurer

Monthly Statement

Date Range: 11/1/2025 to 11/30/2025

| | | | | |
|---|------------------|---|-----------------------------|---|
| 11/26 | Tax Distribution | 0 | 208.45 | C |
| 11/26 | Tax Distribution | 0 | 65.01 | C |
| 11/26 | Tax Distribution | 0 | 51.98 | C |
| 12100.2022 2022 Personal Property Taxes | | | Source Code Total: 3.62 | |
| 11/10 | Tax Distribution | 0 | 3.62 | C |
| 12100.2024 2024 Personal Property Taxes | | | Source Code Total: 18.97 | |
| 11/06 | Tax Distribution | 0 | 4.29 | C |
| 11/06 | Tax Distribution | 0 | 4.00 | C |
| 11/10 | Tax Distribution | 0 | 6.17 | C |
| 11/10 | Tax Distribution | 0 | 1.33 | C |
| 11/20 | Tax Distribution | 0 | 1.37 | C |
| 11/25 | Tax Distribution | 0 | 1.81 | C |
| 12100.2025 2025 Personal Property Taxes | | | Source Code Total: 1,158.49 | |
| 11/03 | Tax Distribution | 0 | 12.46 | C |
| 11/03 | Tax Distribution | 0 | 79.00 | C |
| 11/03 | Tax Distribution | 0 | 41.55 | C |
| 11/03 | Tax Distribution | 0 | .52 | C |
| 11/03 | Tax Distribution | 0 | 2.73 | C |
| 11/04 | Tax Distribution | 0 | 18.33 | C |
| 11/04 | Tax Distribution | 0 | 86.89 | C |
| 11/04 | Tax Distribution | 0 | 55.89 | C |
| 11/04 | Tax Distribution | 0 | 106.65 | C |
| 11/04 | Tax Distribution | 0 | 2.56 | C |
| 11/05 | Tax Distribution | 0 | 48.62 | C |
| 11/05 | Tax Distribution | 0 | 44.74 | C |
| 11/05 | Tax Distribution | 0 | .84 | C |
| 11/05 | Tax Distribution | 0 | .50 | C |
| 11/06 | Tax Distribution | 0 | 11.17 | C |
| 11/06 | Tax Distribution | 0 | 68.83 | C |
| 11/06 | Tax Distribution | 0 | 11.73 | C |
| 11/06 | Tax Distribution | 0 | 2.88 | C |
| 11/07 | Tax Distribution | 0 | (2.28) | C |
| 11/07 | Tax Distribution | 0 | 40.71 | C |
| 11/10 | Tax Distribution | 0 | 56.94 | C |
| 11/10 | Tax Distribution | 0 | 9.07 | C |
| 11/10 | Tax Distribution | 0 | 37.36 | C |
| 11/10 | Tax Distribution | 0 | 6.79 | C |
| 11/12 | Tax Distribution | 0 | 15.09 | C |
| 11/12 | Tax Distribution | 0 | 3.81 | C |
| 11/12 | Tax Distribution | 0 | 1.67 | C |
| 11/13 | Tax Distribution | 0 | 17.52 | C |
| 11/13 | Tax Distribution | 0 | 22.24 | C |
| 11/14 | Tax Distribution | 0 | 10.91 | C |



Yavapai County Treasurer

Monthly Statement

Date Range: 11/1/2025 to 11/30/2025

| | | | | |
|---|---------------------|---|-----------------------------------|---|
| 11/14 | Tax Distribution | 0 | 21.98 | C |
| 11/14 | Tax Distribution | 0 | 31.26 | C |
| 11/17 | Tax Distribution | 0 | 37.28 | C |
| 11/17 | Tax Distribution | 0 | 48.33 | C |
| 11/17 | Tax Distribution | 0 | 4.05 | C |
| 11/17 | Tax Distribution | 0 | 5.59 | C |
| 11/18 | Tax Distribution | 0 | 8.55 | C |
| 11/18 | Tax Distribution | 0 | 8.98 | C |
| 11/18 | Tax Distribution | 0 | 14.04 | C |
| 11/19 | Tax Distribution | 0 | .01 | C |
| 11/19 | Tax Distribution | 0 | 10.86 | C |
| 11/20 | Tax Distribution | 0 | 9.67 | C |
| 11/20 | Tax Distribution | 0 | 1.81 | C |
| 11/21 | Tax Distribution | 0 | 16.16 | C |
| 11/24 | Tax Distribution | 0 | 8.23 | C |
| 11/24 | Tax Distribution | 0 | 37.69 | C |
| 11/24 | Tax Distribution | 0 | 6.25 | C |
| 11/24 | Tax Distribution | 0 | 2.28 | C |
| 11/24 | Tax Distribution | 0 | 3.18 | C |
| 11/25 | Tax Distribution | 0 | 14.13 | C |
| 11/25 | Tax Distribution | 0 | 28.10 | C |
| 11/25 | Tax Distribution | 0 | 1.09 | C |
| 11/25 | Tax Distribution | 0 | 3.32 | C |
| 11/26 | Tax Distribution | 0 | 4.60 | C |
| 11/26 | Tax Distribution | 0 | 15.33 | C |
| 38109.0 Interest on Investments St Treas | | | Source Code Total: 341.86 | |
| 11/12 | Investment Interest | 0 | 341.86 | C |
| 38111.0 Interest on Investments | | | Source Code Total: 13.98 | |
| 11/04 | Investment Interest | 0 | 13.98 | C |
| 38113.0 Interest on Investments-Wells Fargo | | | Source Code Total: 124.06 | |
| 11/12 | Investment Interest | 0 | 124.06 | C |
| 6065640700 Chino Valley Fire Dist BDS | | | Ending Balance: 316,210.15 | |

Chino Valley Fire District
Bank Reconciliation Summary
For the Bank Statement ending: 11/30/2025

| BANK CONTROL ID: BDS - YAVAPAI COUNTY TREASURER | | DESC: BOND DEBT SERVICE | ACCOUNT NO: 6-66640-7000 |
|---|----------|-------------------------|--------------------------|
| Beginning Balance: | 11/01/25 | | \$281,387.11 |
| Deposits and Credits: | | | \$34,823.04 |
| Checks and Charges: | | | \$0.00 |
| Adjustments: | | | \$0.00 |
| Ending Balance Per Reconciliation: | | | \$316,210.15 |
| Ending Balance Per Bank Statement: | 11/30/25 | | \$316,210.15 |
| * Outstanding Deposits and Credits: | 11/30/25 | | \$0.00 |
| * Outstanding Checks and Charges: | 11/30/25 | | \$0.00 |
| Ending Book Balance: | | | \$316,210.15 |

* Outstanding amounts are all outstanding credits and charges dated prior or equal to the Reconciliation date.

Chino Valley Fire District
BR Checks and Charges Cleared
For the Bank Statement ending:

| Date | Document | Description | Module | Company | Amount |
|------|----------|-------------|--------|---------|--------|
|------|----------|-------------|--------|---------|--------|

TOTAL CHECKS AND CHARGES CLEARED:

Chino Valley Fire District
BR Checks and Charges Outstanding
For the Bank Statement ending:

| <u>Date</u> | <u>Document</u> | <u>Description</u> | <u>Module</u> | <u>Company</u> | <u>Amount</u> |
|-------------|-----------------|--------------------|---------------|----------------|---------------|
|-------------|-----------------|--------------------|---------------|----------------|---------------|

TOTAL CHECKS AND CHARGES OUTSTANDING:

Chino Valley Fire District
BR Deposits and Credits Cleared
For the Bank Statement ending: 11/30/25

| BDS | | Yavapai County Treasurer | | Bond Debt Service | | 6-65640-7000 | |
|-------------------------------------|-------------------|--------------------------------|--------|-------------------|-------------|--------------|--|
| Date | Document | Description | Module | Company | Amount | | |
| 11/30/25 | Cash With Yav Cty | BDS Tax & Interest Revenue Nov | GL | CHINOV | \$34,823.04 | | |
| TOTAL DEPOSITS AND CREDITS CLEARED: | | | | | \$34,823.04 | | |

Chino Valley Fire District
BR Deposits and Credits Outstanding
For the Bank Statement ending:

| Date | Document | Description | Module | Company | Amount |
|------|----------|-------------|--------|---------|--------|
|------|----------|-------------|--------|---------|--------|

TOTAL DEPOSITS AND CREDITS OUTSTANDING:

Chino Valley Fire District
Bank Reconciliation Register

| Document Number | Date | BR Status | Void? | Description | Date Cleared | Amount |
|---|----------|-----------|-------|--------------------------------|--------------|-------------|
| MODULE: JOURNAL ENTRIES FROM GENERAL LEDGER | | | | | | |
| BANK CONTROL ID: BDS - YAVAPAI COUNTY TREASURER | | | | | | |
| Cash With Yav Cty | 11/30/25 | Marked | No | BDS Tax & Interest Revenue Nov | 12/09/25 | \$34,823.04 |
| SUB TOTAL FOR BANK: | | | | | | \$34,823.04 |
| TOTAL FOR MODULE: | | | | | | \$34,823.04 |

Chino Valley Fire District
BR Adjustments Report
For the Bank Statement ending:

| Date | Document | Description | GL Account | Offset Amt | Adj. Amt |
|------|----------|-------------|------------|------------|----------|
|------|----------|-------------|------------|------------|----------|

DOCUMENT:

ADJUSTMENT DOCUMENT " TOTAL:

TOTAL FOR ALL ADJUSTMENTS:

12/9/25
7:24:04 AM

Chino Valley Fire District
Income Statement
(Original Budget to Actual Comparison)
For the period of 11/1/2025 Through 11/30/2025

Fund: (40) Bond Service Fund

| | Account | Actual | Current Period Budget | Variance | % | Actual | Year To Date Budget |
|--------------------------------------|-------------|--------------------|--------------------------|--------------------|--------------|-----------------------|------------------------|
| <u>Revenues</u> | | | | | | | |
| Real Estate Tax | 40420000002 | \$33,162.06 | \$0.00 | \$33,162.06 | 0.0% | \$667,480.74 | \$0.00 |
| Personal Tax Revenue | 40420500000 | 1,181.08 | 0.00 | 1,181.08 | 0.0 | 15,402.98 | 0.00 |
| Misc Revenue | 40510000000 | 0.00 | 0.00 | 0.00 | 0.0 | 36.78 | 0.00 |
| Net Revenues | | \$34,343.14 | \$0.00 | \$34,343.14 | 0.0 % | \$682,920.50 | \$0.00 |
| Income (Loss) from Operations | | \$34,343.14 | \$0.00 | \$34,343.14 | 0.0% | \$682,920.50 | \$0.00 |
| <u>Other Income (Expense)</u> | | | | | | | |
| Bond Debt Service Interest Revenue | 40430000000 | \$479.90 | \$0.00 | \$479.90 | 0.0% | \$15,371.83 | \$0.00 |
| Bond Debt Service Principle Payment | 40600000000 | 0.00 | 0.00 | 0.00 | 0.0 | (380,000.00) | 0.00 |
| Bond Debt Service Interest Expense | 40610000000 | 0.00 | 0.00 | 0.00 | 0.0 | (64,794.32) | 0.00 |
| Total Other Income (Expense) | | \$479.90 | \$0.00 | \$479.90 | 0.0 % | \$(429,422.49) | \$0.00 |
| Net Income (Loss) | | \$34,823.04 | \$0.00 | \$34,823.04 | 0.0% | \$253,498.01 | \$0.00 |

12/9/25
7:24:40 AM

Chino Valley Fire District
Balance Sheet
As of 11/30/2025

Fund: (40) Bond Service Fund
Account: (1105) Not Defined

| Assets | | |
|---|--------------|---------------------|
| <u>Current Assets</u> | | |
| Bond Debt Service | \$316,210.15 | |
| Total Current Assets | | \$316,210.15 |
| Total Assets | | \$316,210.15 |
| Total Liabilities and Net Assets | | \$0.00 |

12/9/25
7:25:27 AM

Chino Valley Fire District
GL Account Ledger - Detail By Period
11/1/2025 through 11/30/2025

| Batch | Journal | Entry # | Date | Job | Document | Description | Debits |
|---------------------------|---------|---------|-------------------|-----|-------------------|-------------------------------------|-------------|
| 40.1105.0.0.000 | | | BOND DEBT SERVICE | | | | |
| 2466 | GJ | 144701 | 11/30/25 | | Cash With Yav Cty | BDS Tax & Interest Revenue Nov 2025 | 34,823.04 |
| BOND DEBT SERVICE TOTALS: | | | | | | | \$34,823.04 |
| TOTAL OF LEDGER: | | | | | | | \$34,823.04 |

12/9/25
7:26:14 AM

Chino Valley Fire District
GL Trial Balance Worksheet
For The Period of 11/1/2025 through 11/30/2025

| Account | Description | Balances | | |
|-----------------|-------------------|--------------|-------------|---------|
| | | Beginning | Debits | Credits |
| 40.1105.0.0.000 | Bond Debt Service | \$281,387.11 | \$34,823.04 | \$0.00 |
| TOTALS: | | \$281,387.11 | \$34,823.04 | \$0.00 |

Inactive accounts are marked and appear in grey.

formstack sign Document Completion Certificate

Document Reference : f6a8fa97-dac0-4e31-9017-0413348c3ae1

Document Title : 2025.11 CHINO BDS Complete Packet

Document Region : Northern Virginia

Sender Name : Tessa Jordan

Sender Email : tjordan@cazfire.gov

Total Document Pages : 18

Secondary Security : Not Required

Participants

1. Tessa Jordan (tjordan@cazfire.gov)
2. Cody Rose (crose@CAZfire.gov)
3. John Feddema (jfeddema@cazfire.gov)

CC

1. kmauldin@cazfire.gov
2. sdixson@cazfire.gov
3. dkrizo@cazfire.gov

Document History

| Timestamp | Description |
|-------------------------------|--|
| 12/09/2025 09:45AM US/Eastern | Sender downloaded document. |
| 12/09/2025 10:04AM US/Eastern | Document sent by Tessa Jordan (tjordan@cazfire.gov). |
| 12/09/2025 10:04AM US/Eastern | Document viewed by Tessa Jordan (tjordan@cazfire.gov). 24.117.179.98 Mozilla/5.0 (Windows NT 10.0; Win64; x64) AppleWebKit/537.36 (KHTML, like Gecko) Chrome/143.0.0.0 Safari/537.36 |
| 12/09/2025 10:04AM US/Eastern | Email sent to Tessa Jordan (tjordan@cazfire.gov). |
| 12/09/2025 10:05AM US/Eastern | Tessa Jordan (tjordan@cazfire.gov) has agreed to terms of service and to do business electronically with Tessa Jordan (tjordan@cazfire.gov). 24.117.179.98 Mozilla/5.0 (Windows NT 10.0; Win64; x64) AppleWebKit/537.36 (KHTML, like Gecko) Chrome/143.0.0.0 Safari/537.36 |
| 12/09/2025 10:05AM US/Eastern | Signed by Tessa Jordan (tjordan@cazfire.gov). 24.117.179.98 Mozilla/5.0 (Windows NT 10.0; Win64; x64) AppleWebKit/537.36 (KHTML, like Gecko) Chrome/143.0.0.0 Safari/537.36 |
| 12/09/2025 10:05AM US/Eastern | Email sent to Cody Rose (crose@CAZfire.gov). |
| 12/09/2025 10:34AM US/Eastern | Document viewed by Cody Rose (crose@CAZfire.gov). 24.117.179.98 Mozilla/5.0 (Windows NT 10.0; Win64; x64) AppleWebKit/537.36 (KHTML, like |

Document History

| Timestamp | Description |
|-------------------------------|---|
| | Gecko) Chrome/141.0.0.0 Safari/537.36 |
| 12/09/2025 10:34AM US/Eastern | Cody Rose (crose@CAZfire.gov) has agreed to terms of service and to do business electronically with Tessa Jordan (tjordan@cazfire.gov). 24.117.179.98 Mozilla/5.0 (Windows NT 10.0; Win64; x64) AppleWebKit/537.36 (KHTML, like Gecko) Chrome/141.0.0.0 Safari/537.36 |
| 12/09/2025 10:34AM US/Eastern | Signed by Cody Rose (crose@CAZfire.gov). 24.117.179.98 Mozilla/5.0 (Windows NT 10.0; Win64; x64) AppleWebKit/537.36 (KHTML, like Gecko) Chrome/141.0.0.0 Safari/537.36 |
| 12/09/2025 10:35AM US/Eastern | Email sent to John Feddema (jfeddema@cazfire.gov). |
| 12/09/2025 11:00AM US/Eastern | Document viewed by John Feddema (jfeddema@cazfire.gov). 24.117.179.98 Mozilla/5.0 (Windows NT 10.0; Win64; x64) AppleWebKit/537.36 (KHTML, like Gecko) Chrome/143.0.0.0 Safari/537.36 |
| 12/09/2025 11:10AM US/Eastern | John Feddema (jfeddema@cazfire.gov) has agreed to terms of service and to do business electronically with Tessa Jordan (tjordan@cazfire.gov). 24.117.179.98 Mozilla/5.0 (Windows NT 10.0; Win64; x64) AppleWebKit/537.36 (KHTML, like Gecko) Chrome/143.0.0.0 Safari/537.36 |
| 12/09/2025 11:10AM US/Eastern | Signed by John Feddema (jfeddema@cazfire.gov). 24.117.179.98 Mozilla/5.0 (Windows NT 10.0; Win64; x64) AppleWebKit/537.36 (KHTML, like Gecko) Chrome/143.0.0.0 Safari/537.36 |
| 12/09/2025 11:10AM US/Eastern | Document copy sent to kmauldin@cazfire.gov. |
| 12/09/2025 11:10AM US/Eastern | Document copy sent to John Feddema (jfeddema@cazfire.gov). |
| 12/09/2025 11:10AM US/Eastern | Document copy sent to sdixson@cazfire.gov. |
| 12/09/2025 11:10AM US/Eastern | Document copy sent to Cody Rose (crose@CAZfire.gov). |
| 12/09/2025 11:10AM US/Eastern | Document copy sent to Tessa Jordan (tjordan@cazfire.gov). |
| 12/09/2025 11:10AM US/Eastern | Document copy sent to dkrizo@cazfire.gov. |

Recorded at the request of:
CHINO VALLEY FIRE DISTRICT

When recorded, mail to:
Chino Valley Fire District
8603 E. Eastridge Drive
Prescott Valley, AZ 86314

| | |
|----------------------|------------------------|
| CAPTION OF DOCUMENT: | RESOLUTION NO. 2025-23 |
| | ANNEXATION - |
| | MENLOVE PROPERTY |
| | PARCEL 304-04-209E |

CHINO VALLEY FIRE DISTRICT

Resolution No. 2025-23

Annexation – Menlove - Parcel 304-04-209E – 280 W Acapulco Way

A FORMAL RESOLUTION OF THE ELECTED BOARD OF THE CHINO VALLEY FIRE DISTRICT ORDERING A CHANGE OF THE FIRE DISTRICT BOUNDARIES TO INCLUDE THAT PROPERTY DESCRIBED IN EXHIBIT “A” AS ATTACHED HERETO;

WHEREAS, Chino Valley Fire District Governing Board has been presented with a valid request for annexation of the area of the property described in Exhibit “A” as attached hereto, requesting that said property be annexed into the jurisdictional boundaries of the District; and

WHEREAS, the subject property is located within Yavapai County and is contiguous to the boundaries of Chino Valley Fire District as shown on the map attached hereto as Exhibit “B”; and

WHEREAS, all other pertinent requirements of A.R.S. § 48-262 have been addressed and met according to law; and

WHEREAS, the Chino Valley Fire District Board has determined that the inclusion of the subject property within the boundaries of the Chino Valley Fire District will benefit the Chino Valley Fire District and the property owner.

NOW THEREFORE, BE IT RESOLVED that the Fire District Board of Directors does hereby find that the proposed annexation satisfies the requirements of A.R.S. § 48-262(I), and does hereby order the change to its boundaries to include the area described above, as more specifically set forth in the attached legal description Exhibit "A" and map Exhibit "B".

APPROVED AND ADOPTED this 18th day of December, 2025.

Fire Board Chairperson
Chino Valley Fire District

Fire Board Clerk
Chino Valley Fire District

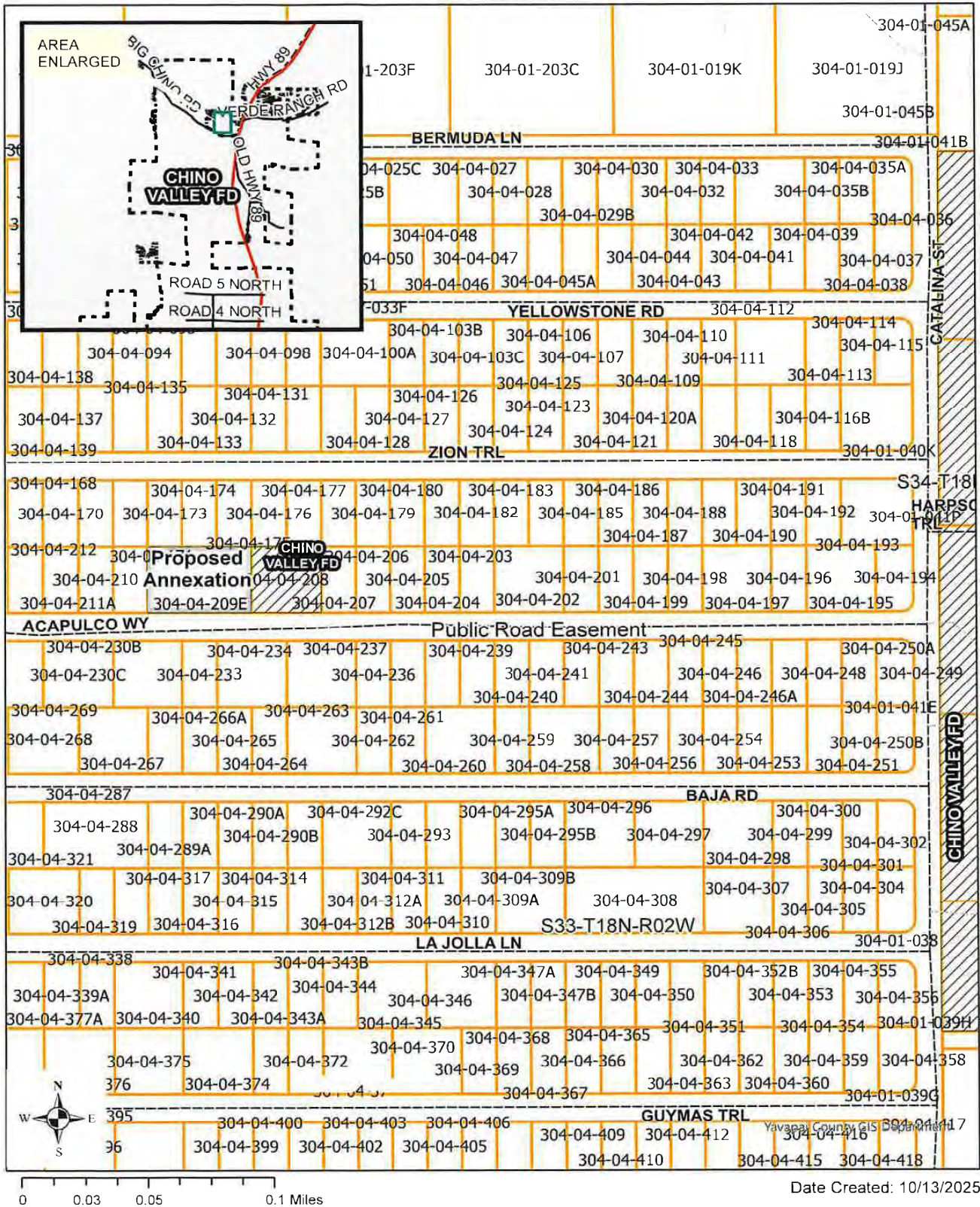
EXHIBIT A

Lot(s) 230, 231, and 232, HOLIDAY LAKES ESTATES, according to the plat of record in Book 8 of Maps, Page(s) 39-40, records of Yavapai County, Arizona.

EXCEPT ½ all oil, gas and other petroleum products, as reserved in Deed recorded in Book 173, Page 218 of Deeds, records of Yavapai County, Arizona.

AND EXCEPT ½ of all oil, gas and other petroleum products, as reserved in Deed recorded in Book 197 of Deeds, Page 68, records of Yavapai County, Arizona.

EXHIBIT B





Chino Valley Fire District Single Parcel Annexation Request Form

Please return completed form along with the legal description to begin the process. A 'clean' legal description is necessary to annex, meaning re-typed and void of a title, headers, footers, page numbers, watermarks, handwriting, or other excess information. Refer to included checklist for further guidance.

Please mail this form and the legal description to:

Chino Valley Fire District
Governing Board
8603 E. Eastridge Drive
Prescott Valley, Arizona 86314

Date: 9-11-25

Dear Board Chairman,

As per A.R.S. § 48-262(H), I would like to request my property be annexed into the boundaries of the Chino Valley Fire District.

My property is adjacent to your current boundaries and is more specifically described as:

Parcel #: 30404209E Section/Township/Range: 33/18 North/2 West

Physical Address: 280 W. Acapulco Way, Paulden, AZ 86334

Owner's Name: Darrell T. & Elizabeth G. Menlove

Mailing Address: PO Box 674
Paulden, AZ 86334

Number of people living in this home: 6 (2 permanent + 4 family temporary)

I appreciate your consideration on this matter and look forward to hearing from you.

Signature of Owner: [Signature]

Signature of Co-Owner: [Signature]

Recorded at the request of:
CHINO VALLEY FIRE DISTRICT

When recorded, mail to:
Chino Valley Fire District
8603 E. Eastridge Drive
Prescott Valley, AZ 86314

CAPTION OF DOCUMENT:

RESOLUTION NO. 2025-24

ANNEXATION -
CHUN PROPERTY
PARCEL 306-01-036C

CHINO VALLEY FIRE DISTRICT

Resolution No. 2025-24

Annexation – Chun - Parcel 306-01-036C – 5405 E Haystack Rd

A FORMAL RESOLUTION OF THE ELECTED BOARD OF THE CHINO VALLEY FIRE DISTRICT ORDERING A CHANGE OF THE FIRE DISTRICT BOUNDARIES TO INCLUDE THAT PROPERTY DESCRIBED IN EXHIBIT “A” AS ATTACHED HERETO;

WHEREAS, Chino Valley Fire District Governing Board has been presented with a valid request for annexation of the area of the property described in Exhibit “A” as attached hereto, requesting that said property be annexed into the jurisdictional boundaries of the District; and

WHEREAS, the subject property is located within Yavapai County and is contiguous to the boundaries of Chino Valley Fire District as shown on the map attached hereto as Exhibit “B”; and

WHEREAS, all other pertinent requirements of A.R.S. § 48-262 have been addressed and met according to law; and

WHEREAS, the Chino Valley Fire District Board has determined that the inclusion of the subject property within the boundaries of the Chino Valley Fire District will benefit the Chino Valley Fire District and the property owner.

NOW THEREFORE, BE IT RESOLVED that the Fire District Board of Directors does hereby find that the proposed annexation satisfies the requirements of A.R.S. § 48-262(I), and does hereby order the change to its boundaries to include the area described above, as more specifically set forth in the attached legal description Exhibit "A" and map Exhibit "B".

APPROVED AND ADOPTED this 18th day of December, 2025.

Fire Board Chairperson
Chino Valley Fire District

Fire Board Clerk
Chino Valley Fire District

EXHIBIT A

Lot 1A, HAYSTACK RANCHES, according to the replat of record in Book 86 of Land Surveys, page 66, records of Yavapai County, Arizona.

EXCEPTING THEREFROM those portions described as follows:

Commencing at the Southwesterly corner of above said Parcel 1A, which is also the Southwesterly corner of Section 9;

Thence North $00^{\circ}17'53''$ East, 450.00 feet along the Westerly line of Parcel 1A to the TRUE POINT OF BEGINNING;

Thence North $00^{\circ}17'53''$ East, 260.43 feet along the Westerly line of Parcel 1A to the Northwest corner thereof;

Thence North $79^{\circ}51'14''$ East, 1,133.88 feet along the Northerly line of Parcel 1A to a point;

Thence South, 285.89 feet to a one-half inch rebar;

Thence South $81^{\circ}08'10''$ West, 1,131.01 feet to the TRUE POINT OF BEGINNING.

AND

Commencing at the Southwesterly corner of above said Parcel 1A which is also the Southwesterly corner of Section 9;

Thence North $00^{\circ}17'53''$ East, 225.00 feet along the Westerly line of Parcel 1A to the TRUE POINT OF BEGINNING;

Thence North $00^{\circ}17'53''$ East, 225.00 feet along the Westerly line of Parcel 1A to a point;

Thence North $81^{\circ}08'10''$ East, 1,131.01 feet to a one-half inch rebar;

Thence South, 320.65 feet to a point on the Southerly line of Parcel 1A marked with a one-half inch rebar;

Thence South $85^{\circ}58'47''$ West, 1,121.43 feet to the TRUE POINT OF BEGINNING.

AND

Commencing at the Southwesterly corner of above said Parcel 1A, which is also the Southwesterly corner of Section 9;

Thence North $00^{\circ}17'53''$ East, 225.00 feet along the Westerly line of Parcel 1A to a point;

Thence North 85°58'47" East, 1,121.43 feet to a one-half inch rebar;

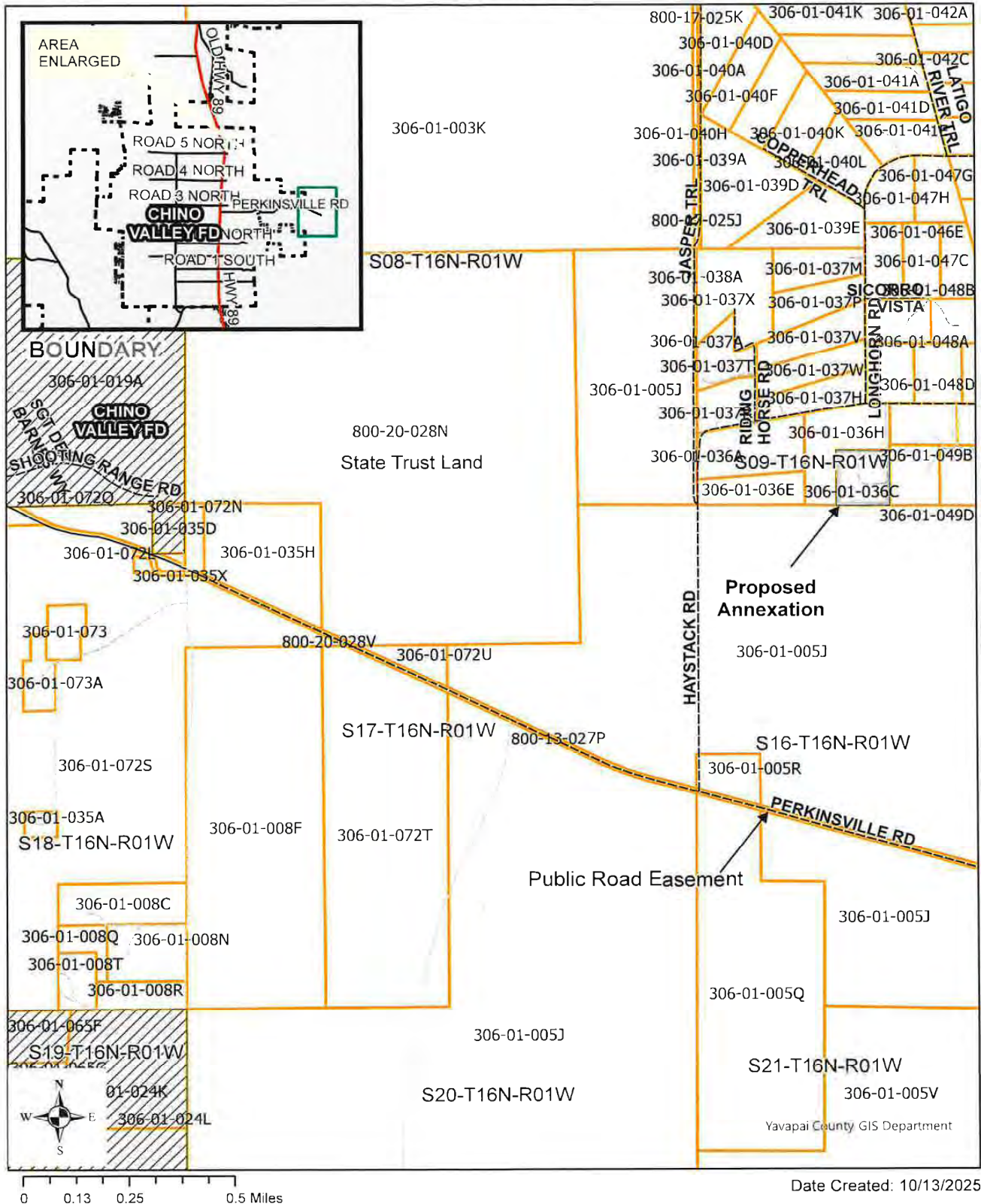
Thence South, 320.37 feet to a point on the Southerly line of Parcel 1A marked with a one-half inch rebar;

Thence North 89°08'34" West 1,119.7 feet to the TRUE POINT OF BEGINNING.

ALSO EXCEPT all oil, gas and minerals, as reserved Deed recorded in Book 168 of Deeds, page 188, records of Yavapai County, Arizona.

and more commonly known as **5405 E. Haystack Road, Chino Valley, AZ**

EXHIBIT B





Chino Valley Fire District Single Parcel Annexation Request Form

Please return completed form along with the legal description to begin the process. A 'clean' legal description is necessary to annex, meaning re-typed and void of a title, headers, footers, page numbers, watermarks, handwriting, or other excess information. Refer to included checklist for further guidance.

Please mail this form and the legal description to:

Chino Valley Fire District
Governing Board
8603 E. Eastridge Drive
Prescott Valley, Arizona 86314

Date: 9/23/2025

Dear Board Chairman,

As per A.R.S. § 48-262(H), I would like to request my property be annexed into the boundaries of the Chino Valley Fire District.

My property is adjacent to your current boundaries and is more specifically described as:

Parcel #: 306-01-0360 Section/Township/Range: 509-T16N-R01W

Physical Address: 5405 E HAYSTACK RD, CHINO VALLEY, AZ 86323

Owner's Name: Kyle & Lauren Chun

Mailing Address: PO Box 1263
CHINO VALLEY AZ 86323

Number of people living in this home: 5

I appreciate your consideration on this matter and look forward to hearing from you.

Signature of Owner: _____

Signature of Co-Owner: _____

RECEIVED
SEP 29 2025

BY: _____

Recorded at the request of:
CHINO VALLEY FIRE DISTRICT

When recorded, mail to:
Chino Valley Fire District
8603 E. Eastridge Drive
Prescott Valley, AZ 86314

CAPTION OF DOCUMENT: RESOLUTION NO. 2025-25

ANNEXATION -
MIRANDA PROPERTY
PARCEL 305-03-406

CHINO VALLEY FIRE DISTRICT

Resolution No. 2025-25

Annexation – Miranda - Parcel 305-03-406 – 180 E Birchwood Dr

A FORMAL RESOLUTION OF THE ELECTED BOARD OF THE CHINO VALLEY FIRE DISTRICT ORDERING A CHANGE OF THE FIRE DISTRICT BOUNDARIES TO INCLUDE THAT PROPERTY DESCRIBED IN EXHIBIT "A" AS ATTACHED HERETO;

WHEREAS, Chino Valley Fire District Governing Board has been presented with a valid request for annexation of the area of the property described in Exhibit "A" as attached hereto, requesting that said property be annexed into the jurisdictional boundaries of the District; and

WHEREAS, the subject property is located within Yavapai County and is contiguous to the boundaries of Chino Valley Fire District as shown on the map attached hereto as Exhibit "B"; and

WHEREAS, all other pertinent requirements of A.R.S. § 48-262 have been addressed and met according to law; and

WHEREAS, the Chino Valley Fire District Board has determined that the inclusion of the subject property within the boundaries of the Chino Valley Fire District will benefit the Chino Valley Fire District and the property owner.

NOW THEREFORE, BE IT RESOLVED that the Fire District Board of Directors does hereby find that the proposed annexation satisfies the requirements of A.R.S. § 48-262(I), and does hereby order the change to its boundaries to include the area described above, as more specifically set forth in the attached legal description Exhibit "A" and map Exhibit "B".

APPROVED AND ADOPTED this 18th day of December, 2025.

Fire Board Chairperson
Chino Valley Fire District

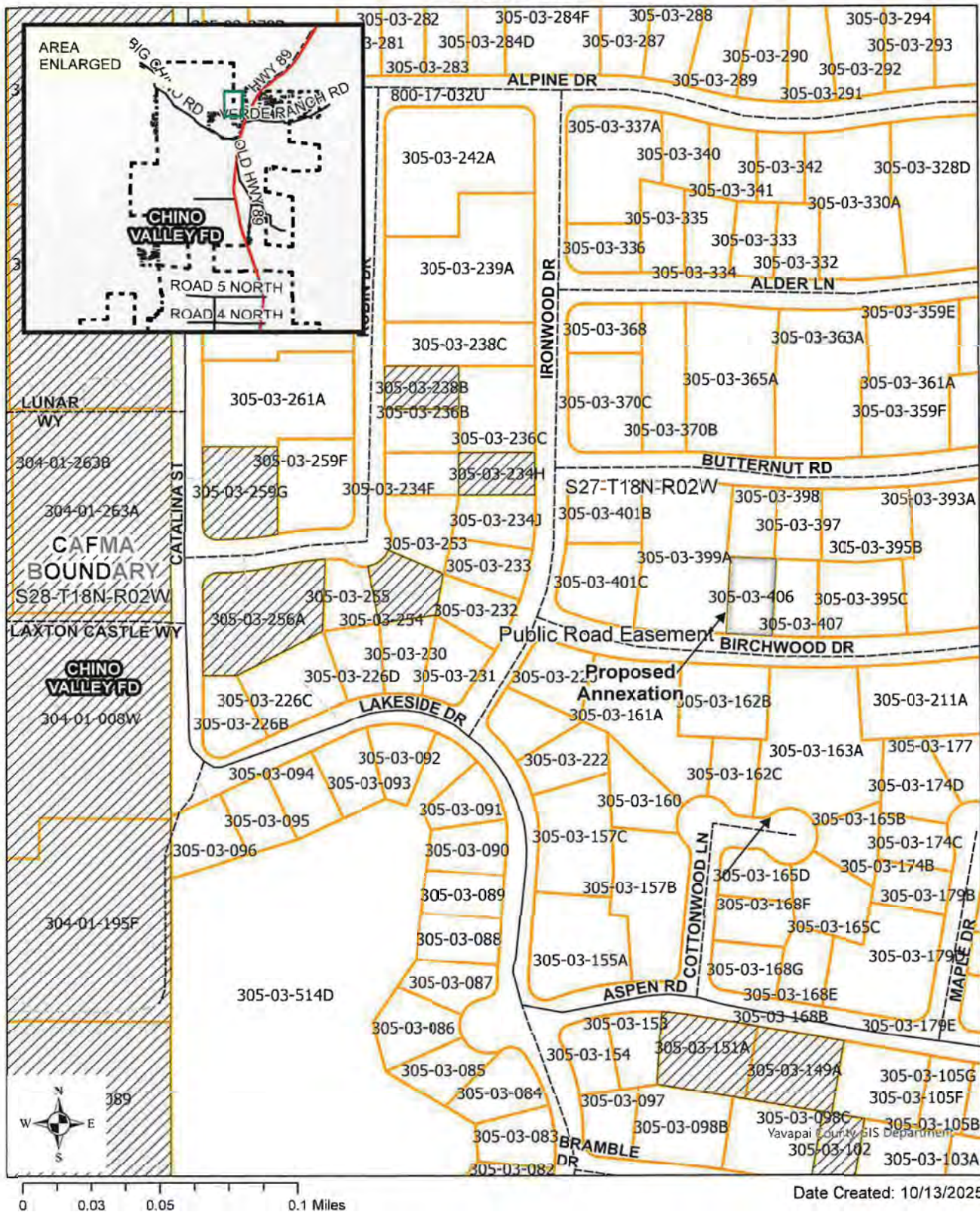
Fire Board Clerk
Chino Valley Fire District

Exhibit A

Lot 406, ANTELOPE LAKES UNIT TWO, according to the plat of record in Book 8 of Maps, page 86, records of Yavapai County, Arizona.

EXCEPT one half of all oil, gas and other petroleum products, recorded in Book 197 of Deeds, page 58, records of Yavapai County, Arizona.

EXHIBIT B





Chino Valley Fire District Single Parcel Annexation Request Form

Please return completed form along with the legal description to begin the process. A 'clean' legal description is necessary to annex, meaning re-typed and void of a title, headers, footers, page numbers, watermarks, handwriting, or other excess information. Refer to included checklist for further guidance.

Please mail this form and the legal description to:

Chino Valley Fire District
Governing Board
8603 E. Eastridge Drive
Prescott Valley, Arizona 86314

Date: SEPT. 7 2025

Dear Board Chairman,

As per A.R.S. § 48-262(H), I would like to request my property be annexed into the boundaries of the Chino Valley Fire District.

My property is adjacent to your current boundaries and is more specifically described as:

Parcel #: 305-03-406 Section/Township/Range: S27-T18N-R02W

Physical Address: 180 E. BIRCHWOOD DR. PAULDEN, AZ 86334

Owner's Name: LUIS VERVERIOS MIRANDA

Mailing Address: 180 E. BIRCHWOOD DR.
PAULDEN, AZ 86334

Number of people living in this home: ONE

I appreciate your consideration on this matter and look forward to hearing from you.

Signature of Owner: Luis V. Miranda

Signature of Co-Owner: _____

Recorded at the request of:
CHINO VALLEY FIRE DISTRICT

When recorded, mail to:
Chino Valley Fire District
8603 E. Eastridge Drive
Prescott Valley, AZ 86314

CAPTION OF DOCUMENT: RESOLUTION NO. 2025-26

ANNEXATION -
HANBY PROPERTY
PARCEL 305-03-281

CHINO VALLEY FIRE DISTRICT

Resolution No. 2025-26
Annexation – Hanby - Parcel 305-03-281 – 66 E Alpine Dr

A FORMAL RESOLUTION OF THE ELECTED BOARD OF THE CHINO VALLEY FIRE DISTRICT ORDERING A CHANGE OF THE FIRE DISTRICT BOUNDARIES TO INCLUDE THAT PROPERTY DESCRIBED IN EXHIBIT “A” AS ATTACHED HERETO;

WHEREAS, Chino Valley Fire District Governing Board has been presented with a valid request for annexation of the area of the property described in Exhibit “A” as attached hereto, requesting that said property be annexed into the jurisdictional boundaries of the District; and

WHEREAS, the subject property is located within Yavapai County and is contiguous to the boundaries of Chino Valley Fire District as shown on the map attached hereto as Exhibit “B”; and

WHEREAS, all other pertinent requirements of A.R.S. § 48-262 have been addressed and met according to law; and

WHEREAS, the Chino Valley Fire District Board has determined that the inclusion of the subject property within the boundaries of the Chino Valley Fire District will benefit the Chino Valley Fire District and the property owner.

NOW THEREFORE, BE IT RESOLVED that the Fire District Board of Directors does hereby find that the proposed annexation satisfies the requirements of A.R.S. § 48-262(I), and does hereby order the change to its boundaries to include the area described above, as more specifically set forth in the attached legal description Exhibit "A" and map Exhibit "B".

APPROVED AND ADOPTED this 18th day of December, 2025.

Fire Board Chairperson
Chino Valley Fire District

Fire Board Clerk
Chino Valley Fire District

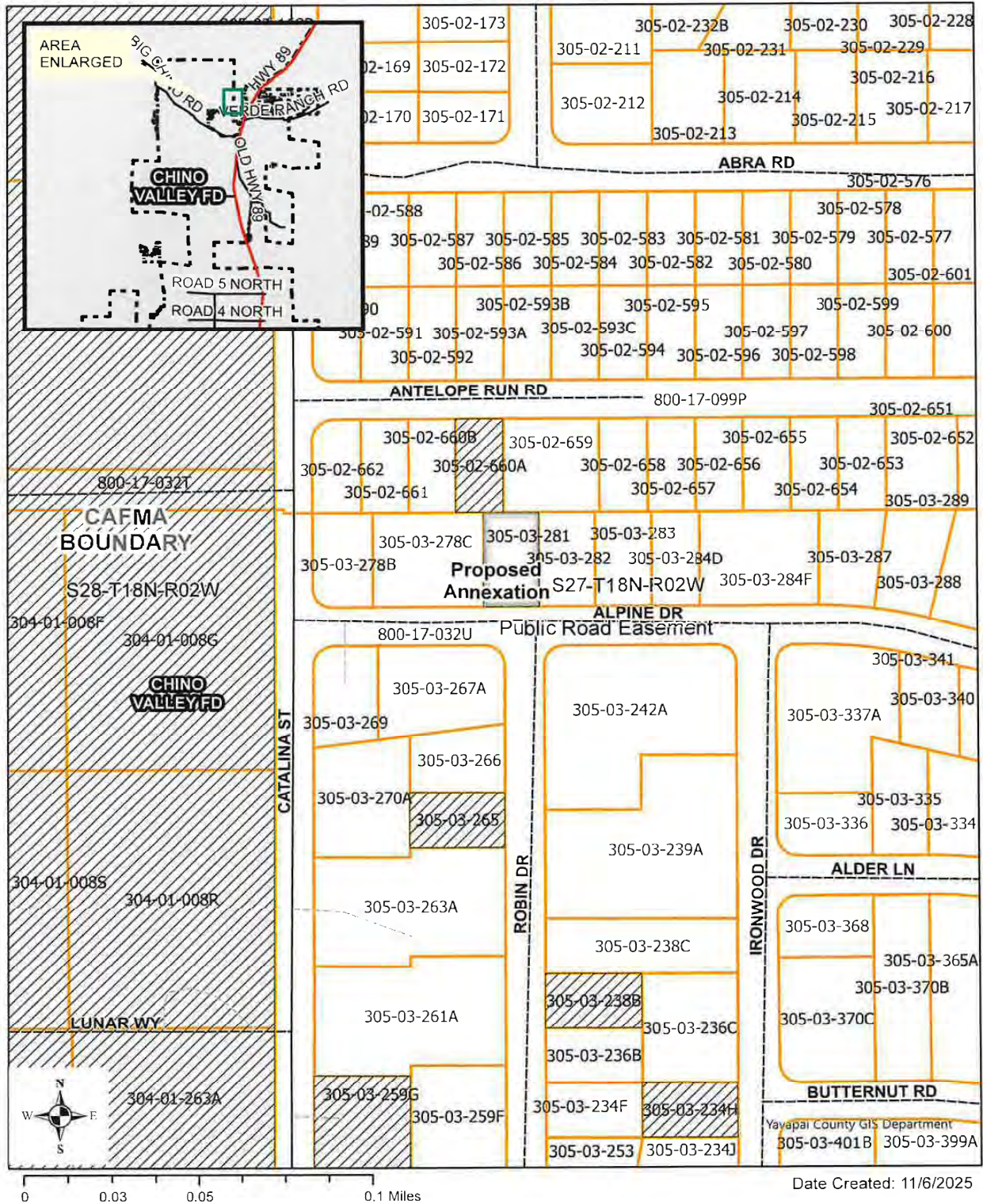
EXHIBIT A

Lot 281, ANTELOPE LAKES UNIT TWO, according to the plat of record in Book 8 of Maps, page 86, records of Yavapai County, Arizona.

EXCEPT an undivided 1/2 interest in and to all oil, gas and other petroleum products as reserved in instrument recorded in Book 173 of Deeds, Page 218, records of Yavapai County, Arizona.

ALSO EXCEPT an undivided 1/2 interest in and to all oil, gas and other petroleum products as reserved in instrument recorded in Book 197 of Deeds, page 68, records of Yavapai County, Arizona.

EXHIBIT B





Chino Valley Fire District Single Parcel Annexation Request Form

Please return completed form along with the legal description to begin the process. A 'clean' legal description is necessary to annex, meaning re-typed and void of a title, headers, footers, page numbers, watermarks, handwriting, or other excess information. Refer to included checklist for further guidance.

Please mail this form and the legal description to:

Chino Valley Fire District
Governing Board
8603 E. Eastridge Drive
Prescott Valley, Arizona 86314

Date: 10/20/2025

Dear Board Chairman,

As per A.R.S. § 48-262(H), I would like to request my property be annexed into the boundaries of the Chino Valley Fire District.

My property is adjacent to your current boundaries and is more specifically described as:

Parcel #: 305-03-281 Section/Township/Range: S.W. 1/4 Section 27, T.18 N., R.2 W.

Physical Address: 66 E Alpine Drive, Paulden AZ 86334

Owner's Name: Gary M. Hanby and Carol L. Hanby

Mailing Address: P.O. Box 1438
Chino Valley, AZ 86323

Number of people living in this home: 4

I appreciate your consideration on this matter and look forward to hearing from you.

Signature of Owner: Gary M. Hanby

Signature of Co-Owner: Carol L. Hanby

Recorded at the request of:
CHINO VALLEY FIRE DISTRICT

When recorded, mail to:
Chino Valley Fire District
8603 E. Eastridge Drive
Prescott Valley, AZ 86314

CAPTION OF DOCUMENT: RESOLUTION NO. 2025-27

ANNEXATION -
SOTO PROPERTY
PARCEL 304-05-125E

CHINO VALLEY FIRE DISTRICT

Resolution No. 2025-27

Annexation – Soto - Parcel 304-05-125E – 380 W Paris Trail

A FORMAL RESOLUTION OF THE ELECTED BOARD OF THE CHINO VALLEY FIRE DISTRICT ORDERING A CHANGE OF THE FIRE DISTRICT BOUNDARIES TO INCLUDE THAT PROPERTY DESCRIBED IN EXHIBIT “A” AS ATTACHED HERETO;

WHEREAS, Chino Valley Fire District Governing Board has been presented with a valid request for annexation of the area of the property described in Exhibit “A” as attached hereto, requesting that said property be annexed into the jurisdictional boundaries of the District; and

WHEREAS, the subject property is located within Yavapai County and is contiguous to the boundaries of Chino Valley Fire District as shown on the map attached hereto as Exhibit “B”; and

WHEREAS, all other pertinent requirements of A.R.S. § 48-262 have been addressed and met according to law; and

WHEREAS, the Chino Valley Fire District Board has determined that the inclusion of the subject property within the boundaries of the Chino Valley Fire District will benefit the Chino Valley Fire District and the property owner.

NOW THEREFORE, BE IT RESOLVED that the Fire District Board of Directors does hereby find that the proposed annexation satisfies the requirements of A.R.S. § 48-262(I), and does hereby order the change to its boundaries to include the area described above, as more specifically set forth in the attached legal description Exhibit "A" and map Exhibit "B".

APPROVED AND ADOPTED this 18th day of December 2025.

Fire Board Chairperson
Chino Valley Fire District

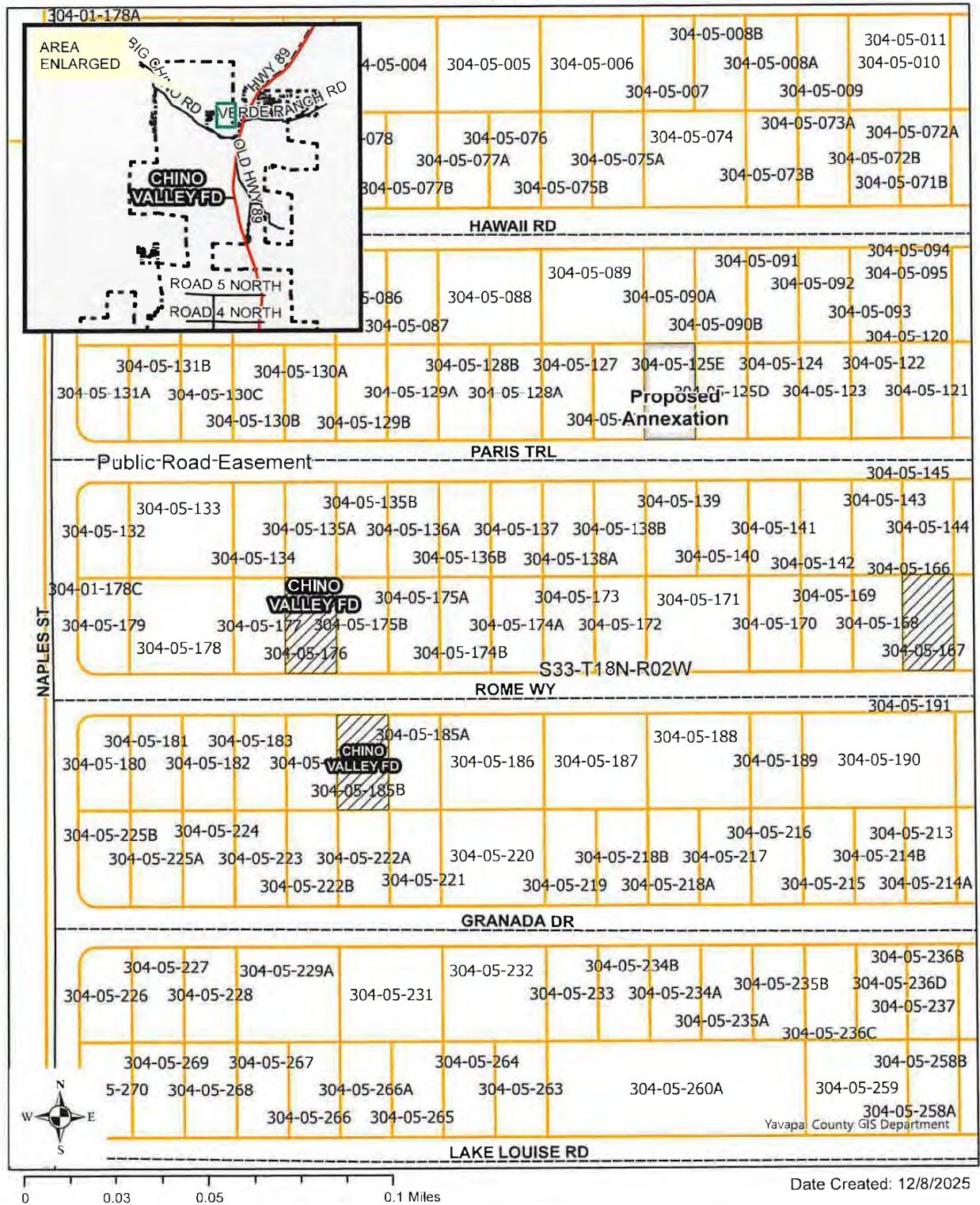
Fire Board Clerk
Chino Valley Fire District

EXHIBIT A

Lots 746, of HOLIDAY LAKE ESTATES, according to the plat of record in Book 8 of Maps, Page 39, records of Yavapai County, Arizona.

EXCEPT ½ of all oil, gas and other petroleum products as reserved in instrument recorded in Book 173 of Deeds, page 218 and in Book 197 of Deeds, page 68.

EXHIBIT B





Chino Valley Fire District Single Parcel Annexation Request Form

Please return completed form along with the legal description to begin the process. A 'clean' legal description is necessary to annex, meaning re-typed and void of a title, headers, footers, page numbers, watermarks, handwriting, or other excess information. Refer to included checklist for further guidance.

Please mail this form and the legal description to:

Chino Valley Fire District
Governing Board
8603 E. Eastridge Drive
Prescott Valley, Arizona 86314

Date: 10.28.25

Dear Board Chairman,

As per A.R.S. § 48-262(H), I would like to request my property be annexed into the boundaries of the Chino Valley Fire District.

My property is adjacent to your current boundaries and is more specifically described as:

Parcel #: 304-05-125E Section/Township/Range: S33-T18N-R02W

Physical Address: 380 W Paris Trl Paulden, AZ 86334

Owner's Name: Dominique Soto

Mailing Address: 4552 N. Spring Dr. Prescott Valley, AZ 86314

Number of people living in this home: 2

I appreciate your consideration on this matter and look forward to hearing from you.

Signature of Owner: Dominique B Soto

Signature of Co-Owner: _____

NOV 24 2025

BY: _____

Recorded at the request of:
CHINO VALLEY FIRE DISTRICT

When recorded, mail to:
Chino Valley Fire District
8603 E. Eastridge Drive
Prescott Valley, AZ 86314

CAPTION OF DOCUMENT: RESOLUTION NO. 2025-28

ANNEXATION -
RDP BUILDERS LLC PROPERTY
PARCEL 305-02-583

CHINO VALLEY FIRE DISTRICT

Resolution No. 2025-28
Annexation – Rdp Builders LLC - Parcel 305-02-583 – 85 E Abra Rd

A FORMAL RESOLUTION OF THE ELECTED BOARD OF THE CHINO VALLEY FIRE DISTRICT ORDERING A CHANGE OF THE FIRE DISTRICT BOUNDARIES TO INCLUDE THAT PROPERTY DESCRIBED IN EXHIBIT “A” AS ATTACHED HERETO;

WHEREAS, Chino Valley Fire District Governing Board has been presented with a valid request for annexation of the area of the property described in Exhibit “A” as attached hereto, requesting that said property be annexed into the jurisdictional boundaries of the District; and

WHEREAS, the subject property is located within Yavapai County and is contiguous to the boundaries of Chino Valley Fire District as shown on the map attached hereto as Exhibit “B”; and

WHEREAS, all other pertinent requirements of A.R.S. § 48-262 have been addressed and met according to law; and

WHEREAS, the Chino Valley Fire District Board has determined that the inclusion of the subject property within the boundaries of the Chino Valley Fire District will benefit the Chino Valley Fire District and the property owner.

NOW THEREFORE, BE IT RESOLVED that the Fire District Board of Directors does hereby find that the proposed annexation satisfies the requirements of A.R.S. § 48-262(I), and does hereby order the change to its boundaries to include the area described above, as more specifically set forth in the attached legal description Exhibit "A" and map Exhibit "B".

APPROVED AND ADOPTED this 18th day of December 2025.

Fire Board Chairperson
Chino Valley Fire District

Fire Board Clerk
Chino Valley Fire District

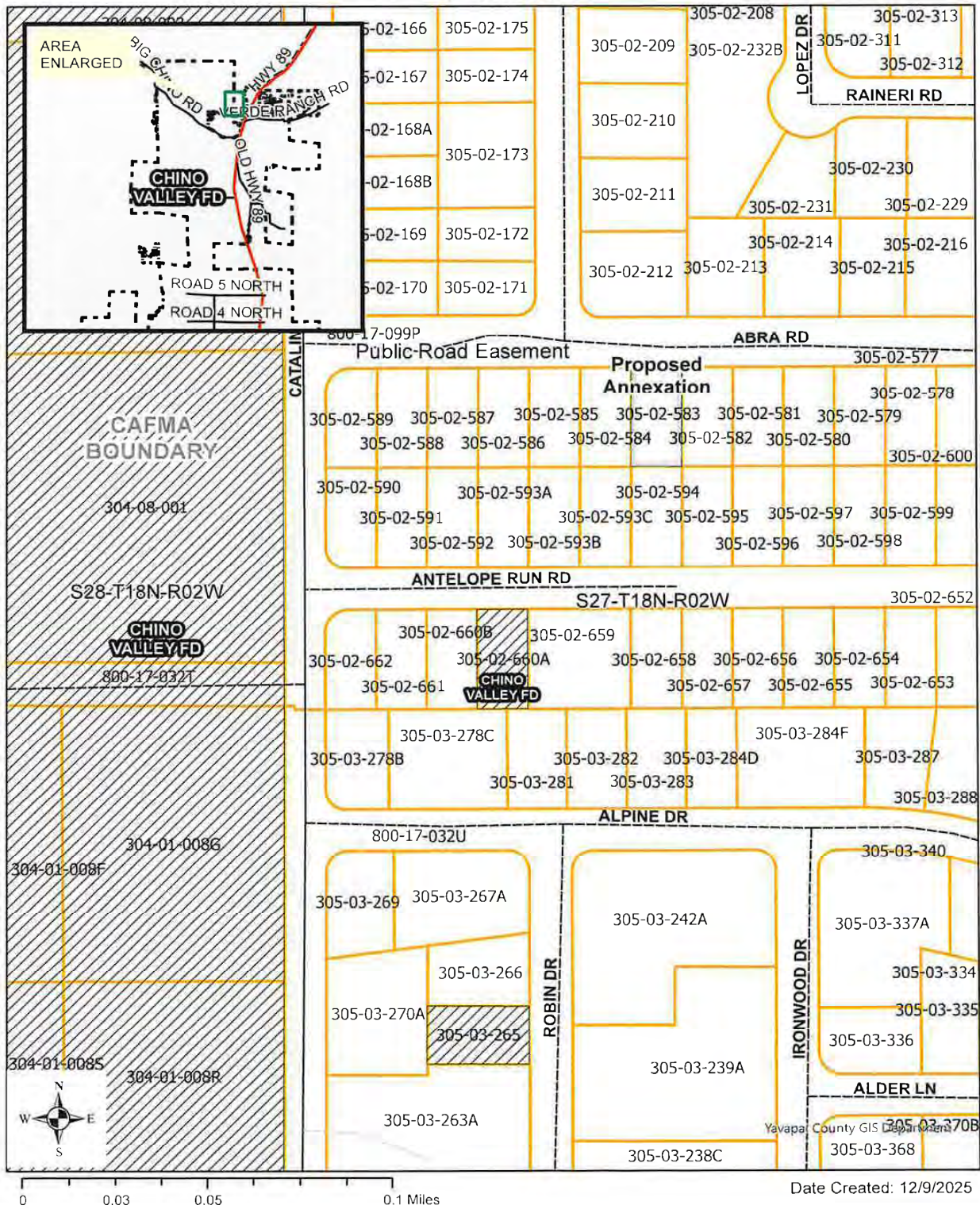
Exhibit A

LOT 594, OF ANTELOPE LAKES, ACCORDING TO THE PLAT OF RECORD IN THE OFFICE OF THE COUNTY RECORDER OF YAVAPAI COUNTY, ARIZONA, RECORDED IN BOOK 8 OF MAPS, PAGE 50;

EXCEPT an undivided $\frac{1}{2}$ interest in and to all oil, gas and other petroleum products, as reserved in instrument, recorded in Book 173 of Deeds, Page 218, records of Yavapai County, Arizona; and

EXCEPT an undivided $\frac{1}{2}$ interest in and to all oil, gas and other petroleum products, as reserved in instrument, recorded in Book 197 of Deeds, Page 68, records of Yavapai County, Arizona.

EXHIBIT B





Chino Valley Fire District Single Parcel Annexation Request Form

Please return completed form along with the legal description to begin the process. A 'clean' legal description is necessary to annex, meaning re-typed and void of a title, headers, footers, page numbers, watermarks, handwriting, or other excess information. Refer to included checklist for further guidance

Please mail this form and the legal description to:

Chino Valley Fire District
Governing Board
8603 E. Eastridge Drive
Prescott Valley, Arizona 86314

Date: 11-13-25

Dear Board Chairman,

As per A.R.S. § 48-262(H), I would like to request my property be annexed into the boundaries of the Chino Valley Fire District.

My property is adjacent to your current boundaries and is more specifically described as:

Parcel #: 305-02-583 Section/Township/Range: S27-T18N-R02W

Physical Address: 85 E Abaca Rd, Paulden, AZ 86324

Owner's Name: Rdp Builders LLC

Mailing Address: 9801 Evening Canopy, Manor, TX 78653

Number of people living in this home: 1

I appreciate your consideration on this matter and look forward to hearing from you.

Signature of Owner: [Signature]

Signature of Co-Owner: _____

Recorded at the request of:
CHINO VALLEY FIRE DISTRICT

When recorded, mail to:
Chino Valley Fire District
8603 E. Eastridge Drive
Prescott Valley, AZ 86314

CAPTION OF DOCUMENT: RESOLUTION NO. 2025-29

ANNEXATION -
RYAN PROPERTY
PARCEL 305-02-586

CHINO VALLEY FIRE DISTRICT

Resolution No. 2025-29
Annexation – Ryan - Parcel 305-02-586 – 51 E Abra Rd

A FORMAL RESOLUTION OF THE ELECTED BOARD OF THE CHINO VALLEY FIRE DISTRICT ORDERING A CHANGE OF THE FIRE DISTRICT BOUNDARIES TO INCLUDE THAT PROPERTY DESCRIBED IN EXHIBIT “A” AS ATTACHED HERETO;

WHEREAS, Chino Valley Fire District Governing Board has been presented with a valid request for annexation of the area of the property described in Exhibit “A” as attached hereto, requesting that said property be annexed into the jurisdictional boundaries of the District; and

WHEREAS, the subject property is located within Yavapai County and is contiguous to the boundaries of Chino Valley Fire District as shown on the map attached hereto as Exhibit “B”; and

WHEREAS, all other pertinent requirements of A.R.S. § 48-262 have been addressed and met according to law; and

WHEREAS, the Chino Valley Fire District Board has determined that the inclusion of the subject property within the boundaries of the Chino Valley Fire District will benefit the Chino Valley Fire District and the property owner.

NOW THEREFORE, BE IT RESOLVED that the Fire District Board of Directors does hereby find that the proposed annexation satisfies the requirements of A.R.S. § 48-262(I), and does hereby order the change to its boundaries to include the area described above, as more specifically set forth in the attached legal description Exhibit "A" and map Exhibit "B".

APPROVED AND ADOPTED this 18th day of December 2025.

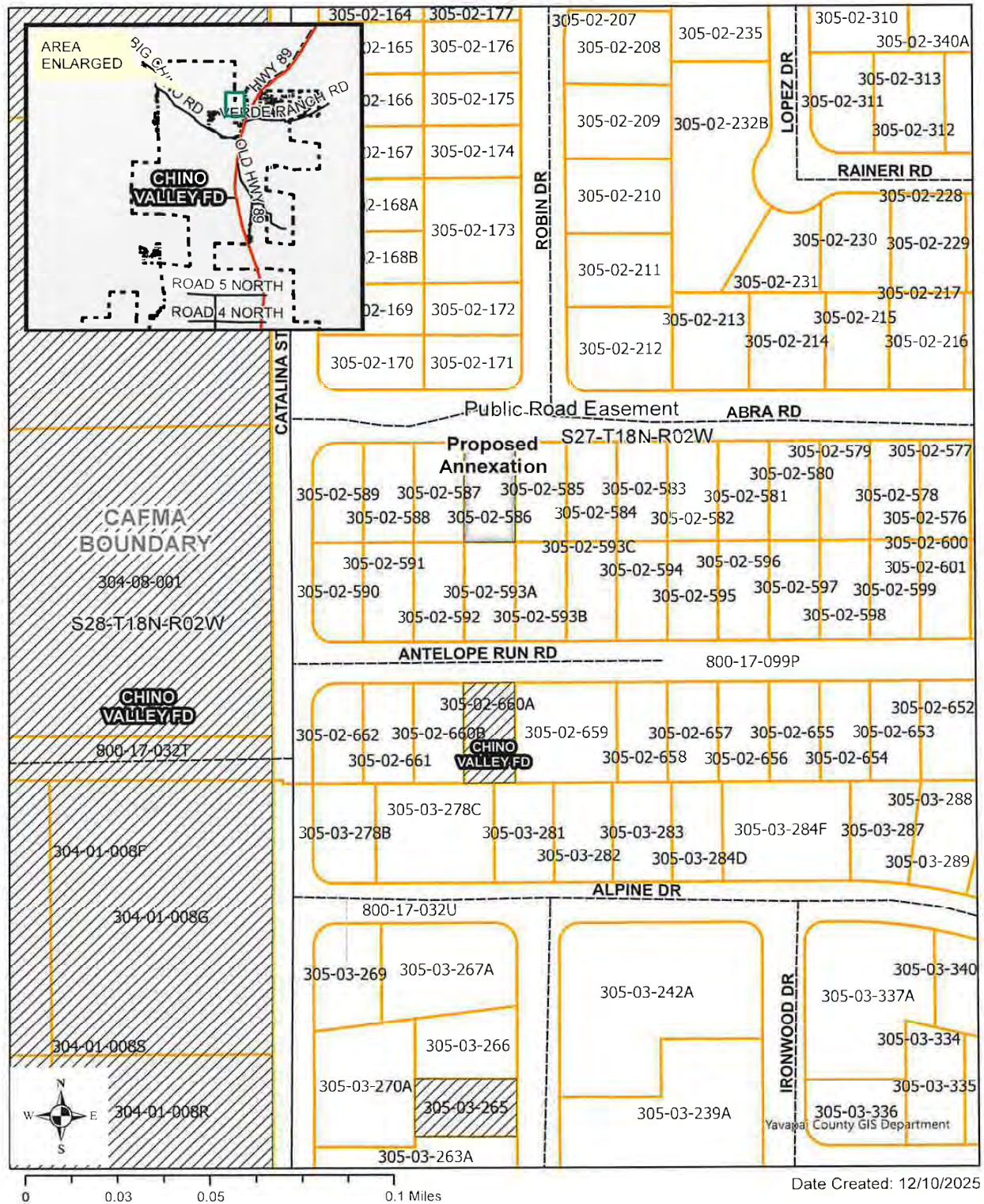
Fire Board Chairperson
Chino Valley Fire District

Fire Board Clerk
Chino Valley Fire District

EXHIBIT A

**Lot 597, ANTELOPE LAKES, according to the plat of record in Book 8 of Maps, page 50,
records of Yavapai County, Arizona.**

EXHIBIT B





Chino Valley Fire District Single Parcel Annexation Request Form

Please return completed form along with the legal description to begin the process. A 'clean' legal description is necessary to annex, meaning re-typed and void of a title, headers, footers, page numbers, watermarks, handwriting, or other excess information. Refer to included checklist for further guidance.

Please mail this form and the legal description to:

Chino Valley Fire District
Governing Board
8603 E. Eastridge Drive
Prescott Valley, Arizona 86314

Date: 11-12-2025

Dear Board Chairman,

As per A.R.S. § 48-262(H), I would like to request my property be annexed into the boundaries of the Chino Valley Fire District.

My property is adjacent to your current boundaries and is more specifically described as:

Parcel #: 305-02-586 Section/Township/Range: S27-T18N-R2W

Physical Address: 51 E Abora Rd., Paulden, AZ 86334

Owner's Name: Dan Ryan

Mailing Address: 2015 N. Cherokee Dr. Chino Valley, AZ 86323

Number of people living in this home: 1

I appreciate your consideration on this matter and look forward to hearing from you.

Signature of Owner: 

Signature of Co-Owner: _____

NOV 24 2025

B7: _____

Recorded at the request of:
CHINO VALLEY FIRE DISTRICT

When recorded, mail to:
Chino Valley Fire District
8603 E. Eastridge Drive
Prescott Valley, AZ 86314

CAPTION OF DOCUMENT: RESOLUTION NO. 2025-30

ANNEXATION -
RYAN PROPERTY
PARCEL 305-02-585

CHINO VALLEY FIRE DISTRICT

Resolution No. 2025-30
Annexation – Ryan - Parcel 305-02-585 – 61 E Abra Rd

A FORMAL RESOLUTION OF THE ELECTED BOARD OF THE CHINO VALLEY FIRE DISTRICT ORDERING A CHANGE OF THE FIRE DISTRICT BOUNDARIES TO INCLUDE THAT PROPERTY DESCRIBED IN EXHIBIT “A” AS ATTACHED HERETO;

WHEREAS, Chino Valley Fire District Governing Board has been presented with a valid request for annexation of the area of the property described in Exhibit “A” as attached hereto, requesting that said property be annexed into the jurisdictional boundaries of the District; and

WHEREAS, the subject property is located within Yavapai County and is contiguous to the boundaries of Chino Valley Fire District as shown on the map attached hereto as Exhibit “B”; and

WHEREAS, all other pertinent requirements of A.R.S. § 48-262 have been addressed and met according to law; and

WHEREAS, the Chino Valley Fire District Board has determined that the inclusion of the subject property within the boundaries of the Chino Valley Fire District will benefit the Chino Valley Fire District and the property owner.

NOW THEREFORE, BE IT RESOLVED that the Fire District Board of Directors does hereby find that the proposed annexation satisfies the requirements of A.R.S. § 48-262(I), and does hereby order the change to its boundaries to include the area described above, as more specifically set forth in the attached legal description Exhibit "A" and map Exhibit "B".

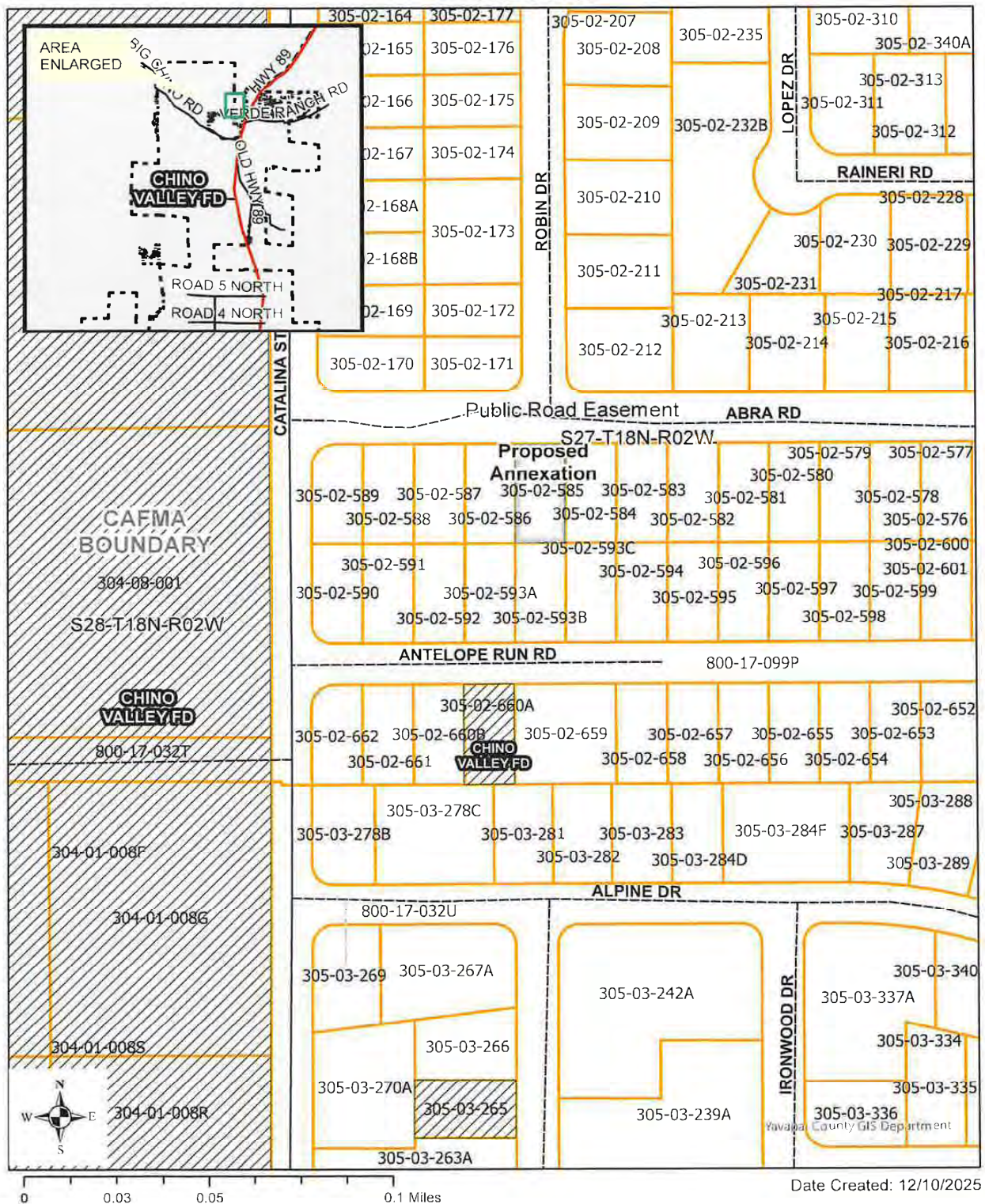
APPROVED AND ADOPTED this 18th day of December 2025.

Fire Board Chairperson
Chino Valley Fire District

Fire Board Clerk
Chino Valley Fire District

EXHIBIT A

Lot 596, ANTELOPE LAKES, according to the plat of record in Book 8 of Maps, page 50, records of Yavapai County, Arizona.

EXHIBIT B



Chino Valley Fire District Single Parcel Annexation Request Form

Please return completed form along with the legal description to begin the process. A 'clean' legal description is necessary to annex, meaning re-typed and void of a title, headers, footers, page numbers, watermarks, handwriting, or other excess information. Refer to included checklist for further guidance.

Please mail this form and the legal description to:

Chino Valley Fire District
Governing Board
8603 E. Eastridge Drive
Prescott Valley, Arizona 86314

Date: 11-13-2025

Dear Board Chairman,

As per A.R.S. § 48-262(H), I would like to request my property be annexed into the boundaries of the Chino Valley Fire District.

My property is adjacent to your current boundaries and is more specifically described as:

Parcel #: 305-02-585 Section/Township/Range: S27-T18N-R02W

Physical Address: 101 E. Adra Rd. Paulden, AZ 86334

Owner's Name: Dan Ryan

Mailing Address: 2015 N. Cherokee Dr. Chino Valley, AZ 86323

Number of people living in this home: 1

I appreciate your consideration on this matter and look forward to hearing from you.

Signature of Owner: Dan S. Ryan

Signature of Co-Owner: _____

NOV 24 2025

BY: _____